

Standing Seam Clamps

For standing seam sheet
Non-penetrative, robust and waterproof

Quickly

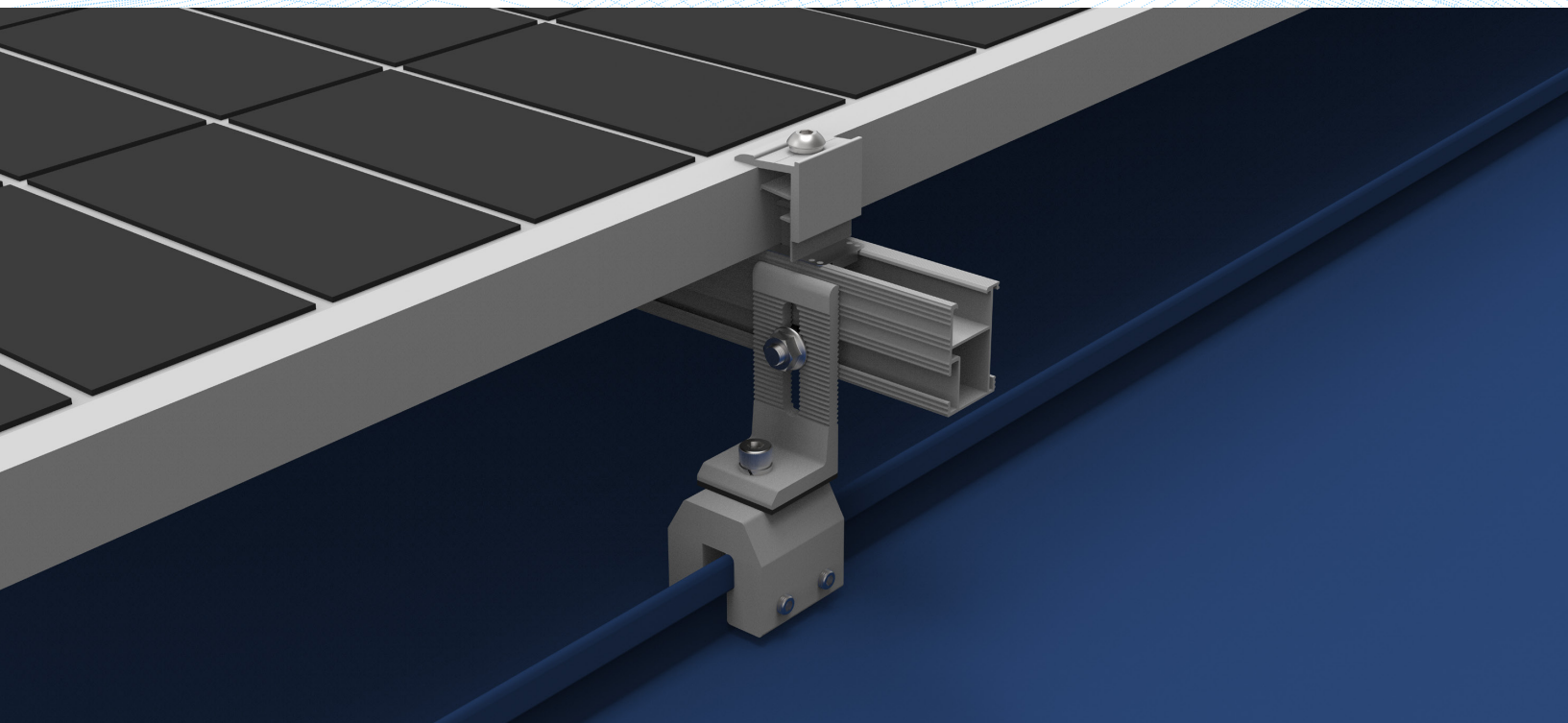
- Automated production line
- Professional package team
- Certified production process

Premium Materials

- Anodized Al6005-T5
- SUS 304 side screw

OEM Service

- Rail or rail-less
- Customized metal sheet roof



1

Universality

Suitable for most standing seam metal sheet
Portrait or landscape

2

Friendly

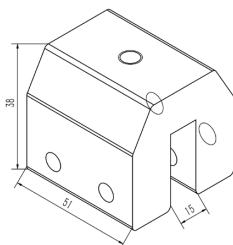
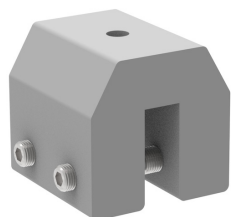
No drilling
Friendly to metal sheet
EPDM Integrated

3

Strong

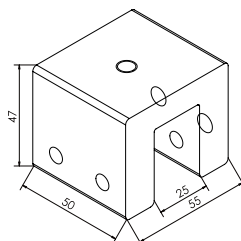
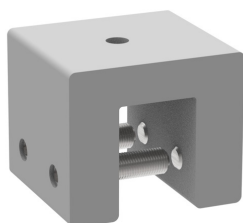
Easy compatible with L feet solar mounting system
Good load bearing capacity

Universal Standing Seam Clamp



• WQ-AC-17

Universal Standing Seam Clamp 17#, for seam less than 14mm

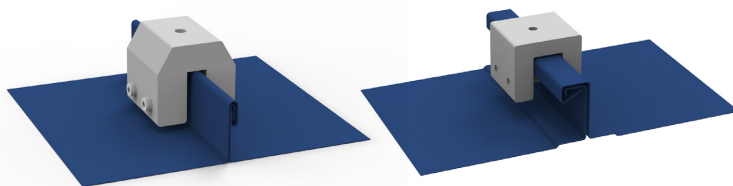
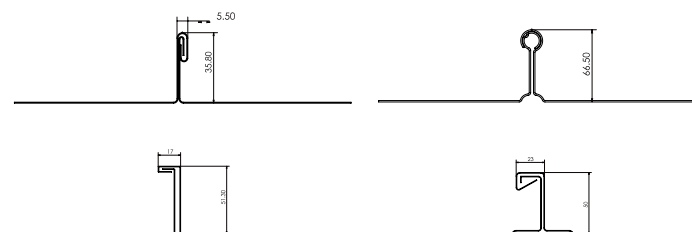


• WQ-AC-28

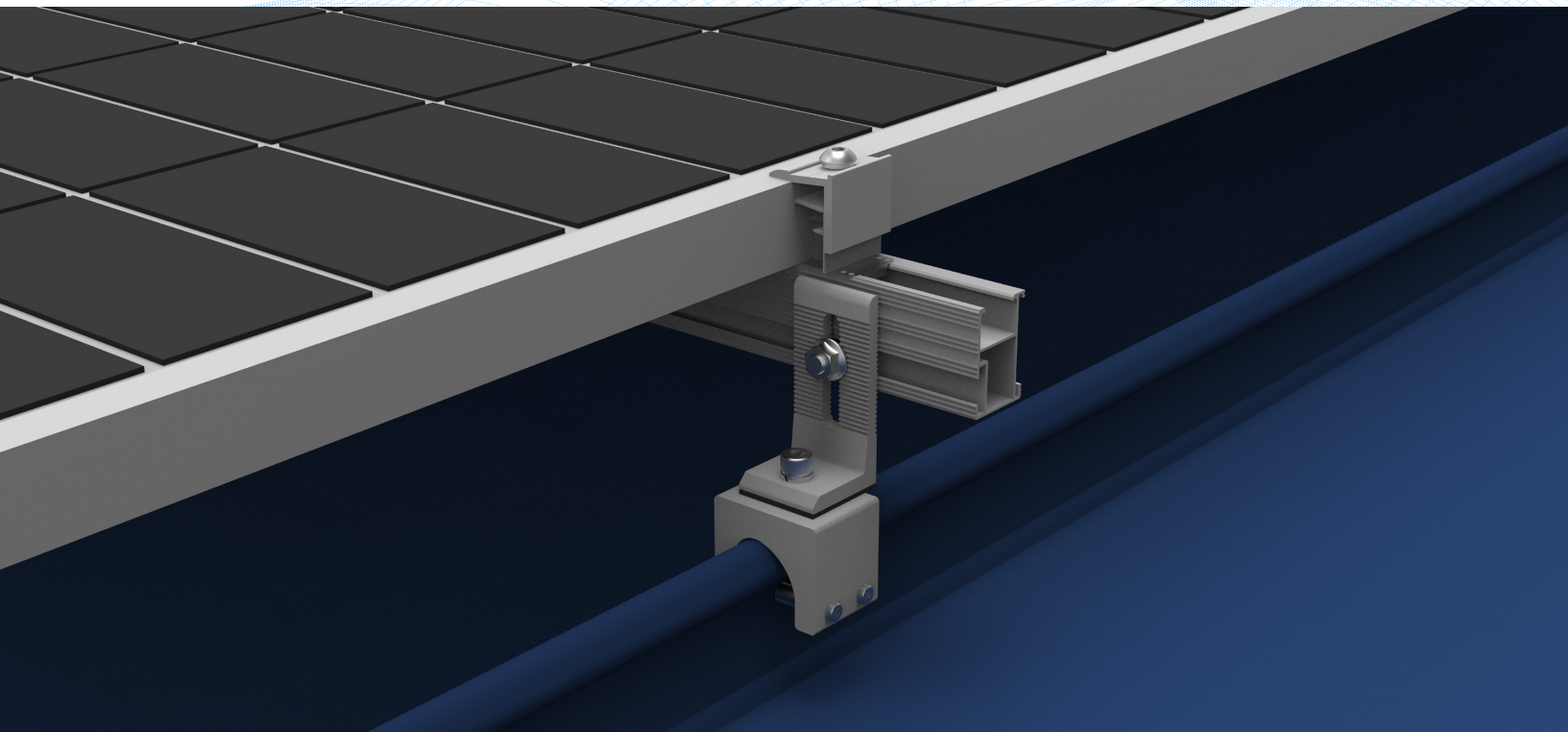
Universal Standing Seam Clamp 28#, for seam between 14mm to 25mm

Workable Metal Sheet

Unit:mm



ROUND BULB STANDING SEAM CLAMP



1

Universality

Suitable for round bulb standing seam metal sheet
The round seam width less than 23mm

2

Friendly

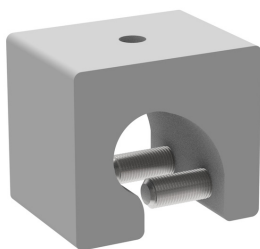
No drilling
Friendly to metal sheet
EPDM Integrated

3

Strong

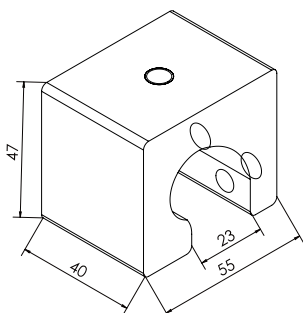
Easy compatible with L feet solar mounting system
Good load bearing capacity

21# Standing Seam Clamp



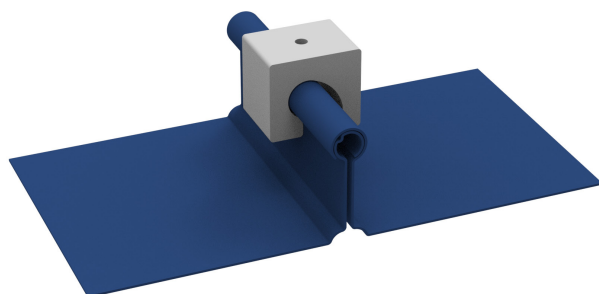
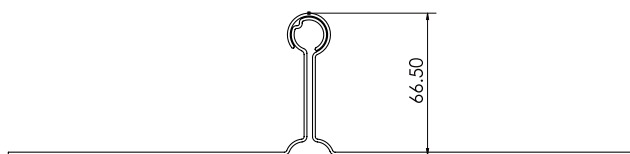
• WQ-AC-21

Standing Seam Clamp21#, universal for round seam

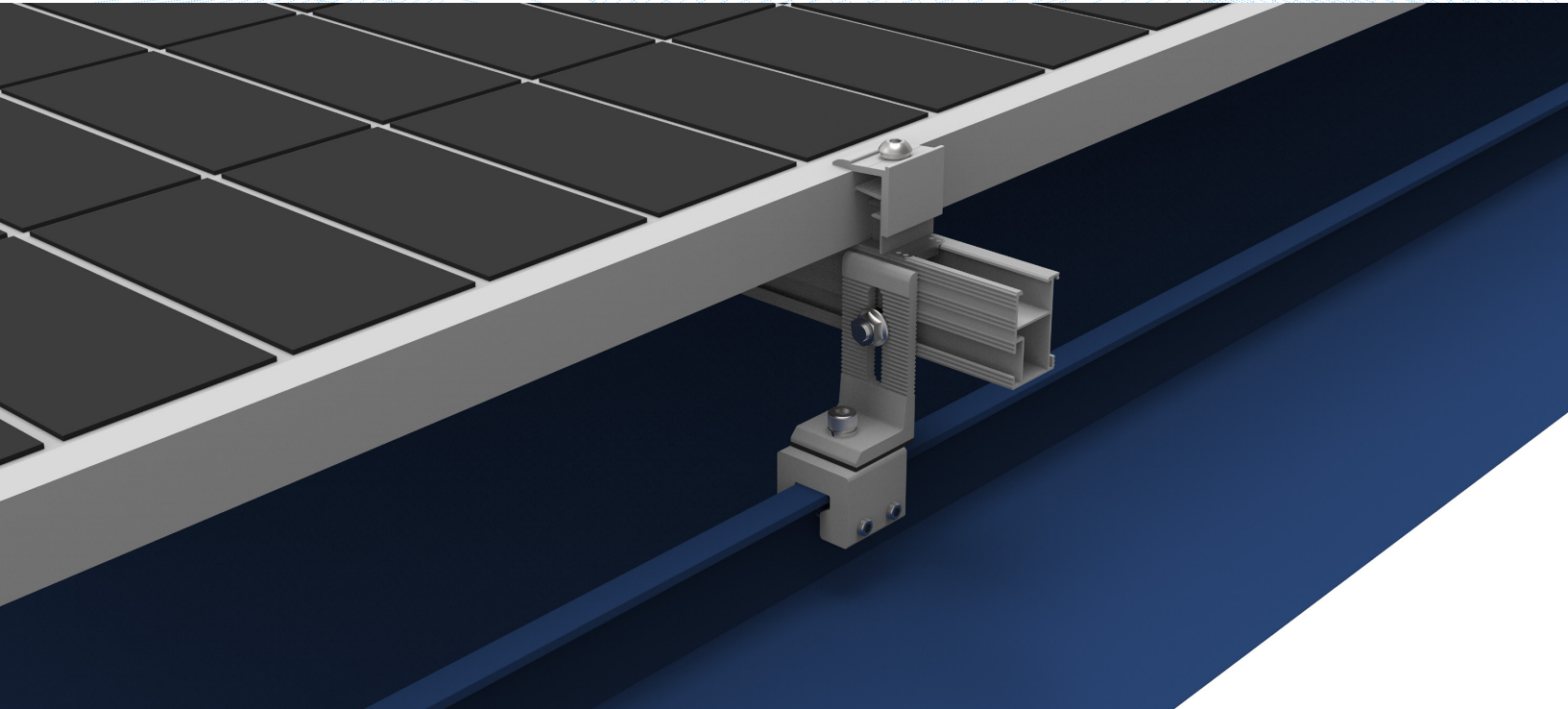


Workable Metal Sheet

Unit:mm



90 DEGREE STANDING SEAM CLAMP



1

Universality

Suitable for single fold in 90-degree standing seam metal sheet

2

Friendly

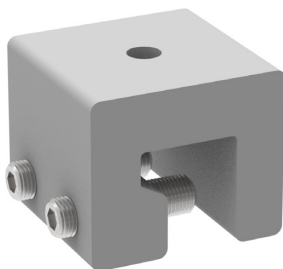
No drilling
Friendly to metal sheet
EPDM Integrated

3

Strong

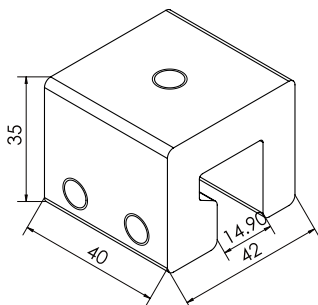
Easy compatible with L feet solar mounting system
Good load bearing capacity

23# Standing Seam Clamp



• WQ-AC-23

Standing Seam Clamp23#, for width less than 21mm



Workable Metal Sheet

Unit:mm

