



## L Feet Solar Mounting System

Easy, Fast and Cost-effective

### Quickly

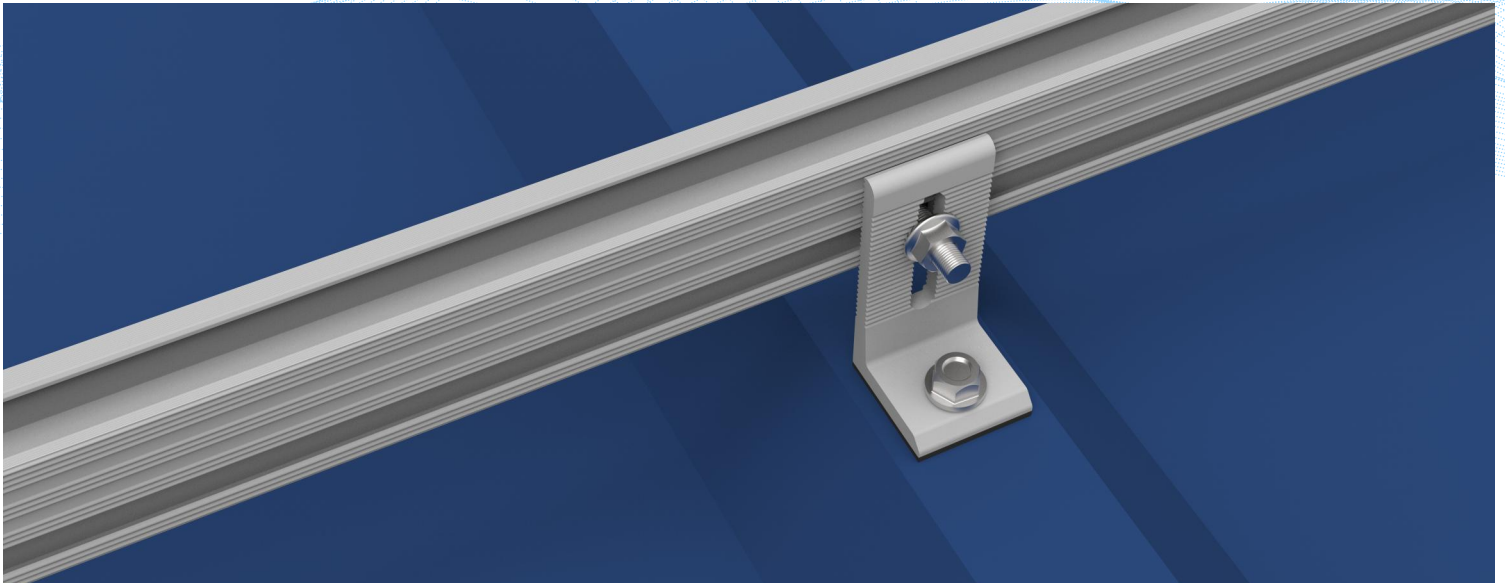
- Automated production line
- Professional package team
- Large stock

### Premium Materials

- Al6005-T5
- SUS 304 fasteners

### Customized

- Customized hole position
- Customized height

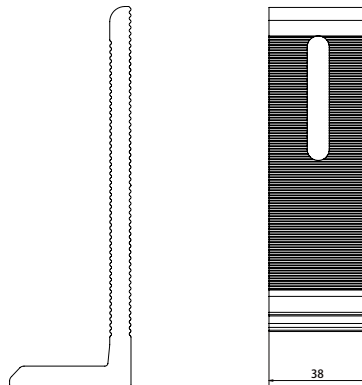
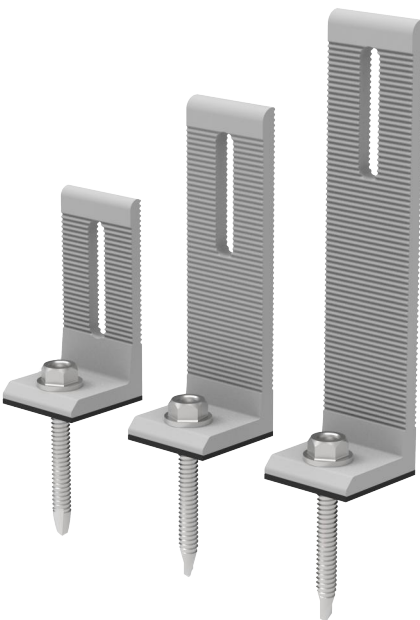


**1 Flexible**  
Suitable for trapezoidal, corrugated and sandwich metal sheet roof  
Three height for choice: 85mm, 125mm, 165mm

**2 Fast and Easy Installation**  
Fixing the L Feet requires only a standard drill  
EPDM pad pre-pasted for waterproof

**3 Durability**  
Design to withstand various climate conditions like heavy rainfall, strong winds, and scorching heat

**Specification**



Unit:mm

Code	Height	Width
WQ-AH-01-Z-85	85	38
WQ-AH-01-Z-125	125	38
WQ-AH-01-Z-165	165	38

**Installation**

