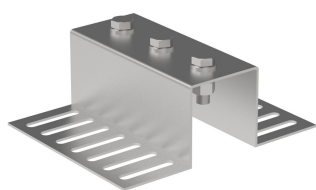


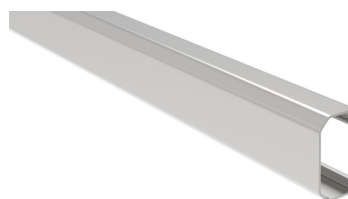
Components



Solar panel fixing



Mid-clamp

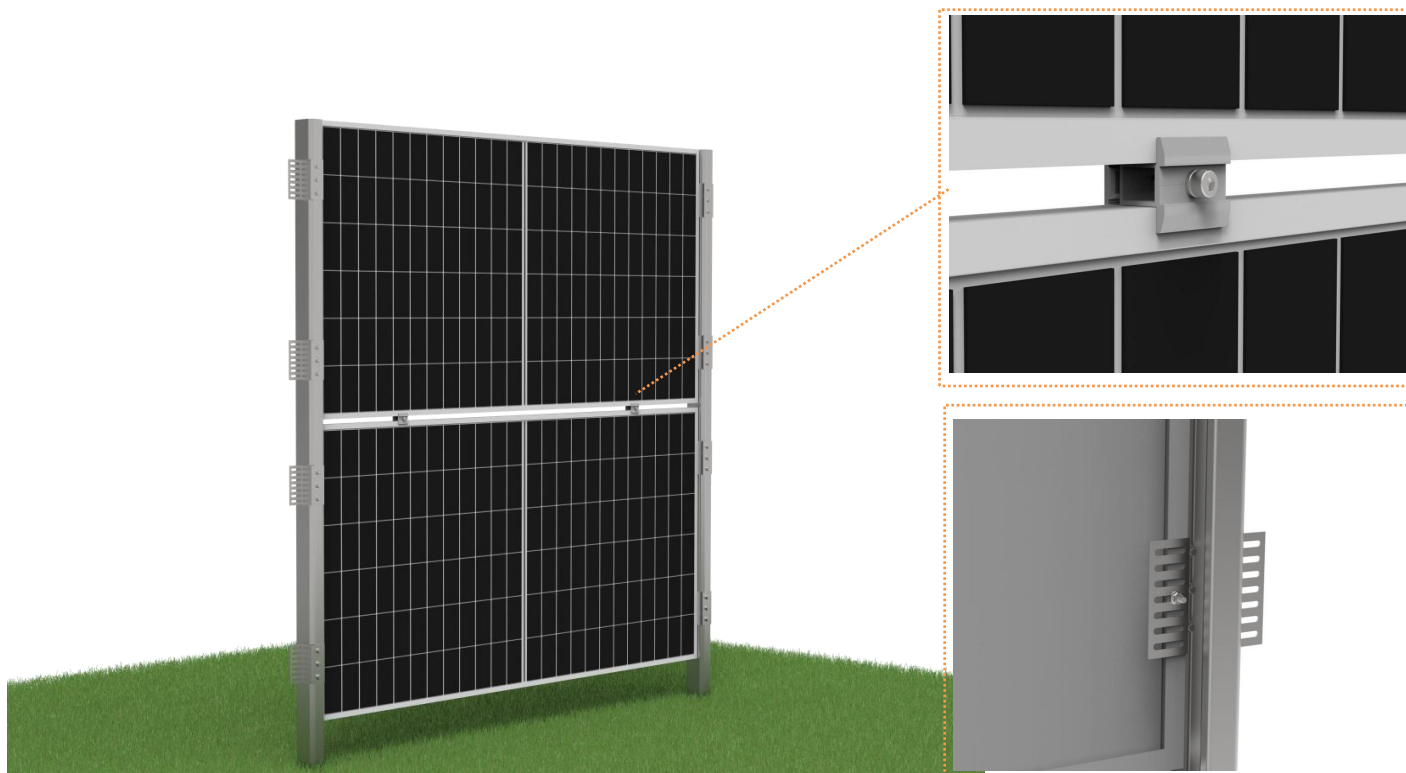


Column

Advantage

- Only two components
- Easy and quick to install
- Best idea for DIY installation
- Use the modules frame hole to fix modules, perfect to protect the modules

Unique Feature



Technical Data

| | |
|--------------------|---|
| Product name | Vertical Solar Fence System |
| Application | Ground |
| Finish | Hot dip Galvanaized Steel, average 75um |
| Material | Q235B |
| PV module | Framed or Unframed |
| Module size | Small and Big modules |
| Module orientation | Landscape |
| Module direction | South , North |
| Foundation | Concrete |