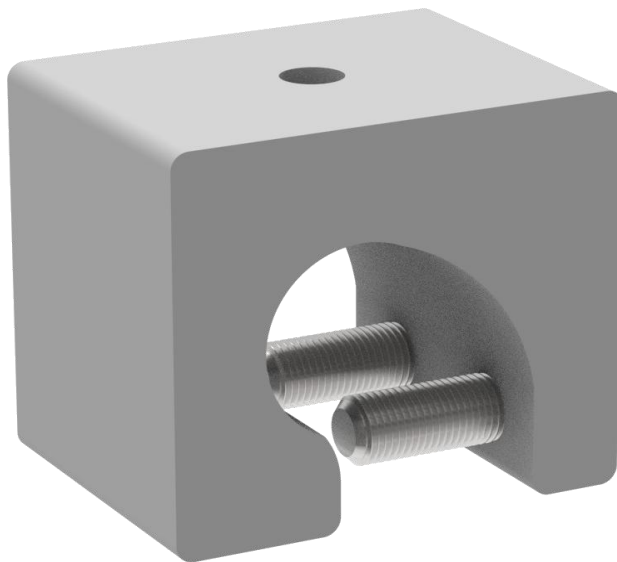
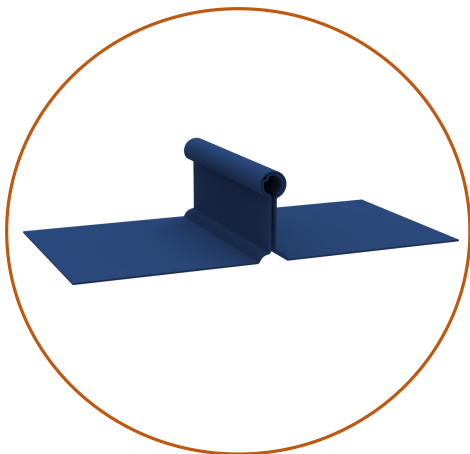


WOCHN standing seam clamp WQ-AC-21 is for solar installation on most of round bulb standing seam metal roof with the round seam width less than 23mm. This clamp maintains the elegance of your standing seam roof with no penetrate to the roof material. The simplest and easiest installation way for standing seam roof make it used widely worldwide.



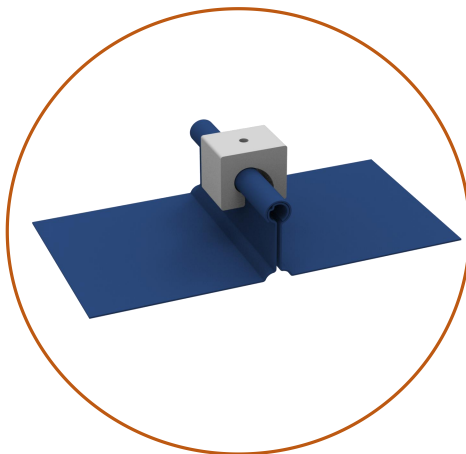
Standing Seam Clamp

Item:WQ-AC-21



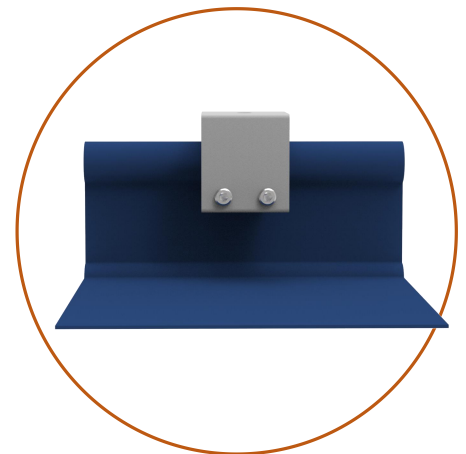
Roof Type

Suitable for round-bulb seams
 $\leq 23\text{mm}$



Roof Friendly

Install on the roof-seam directly ,
non penetrative

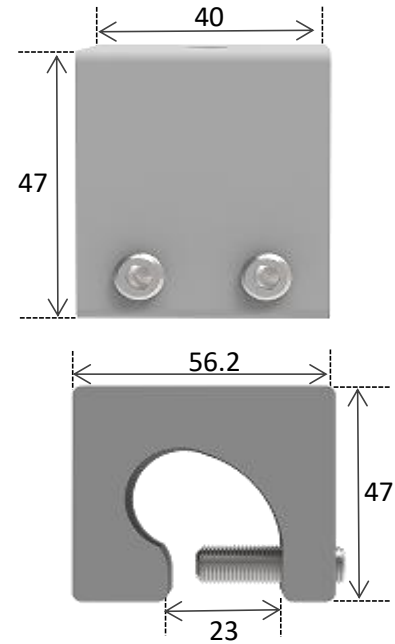


Easy Installation

Fasten clamp on roof seam with
blind rivets in one side

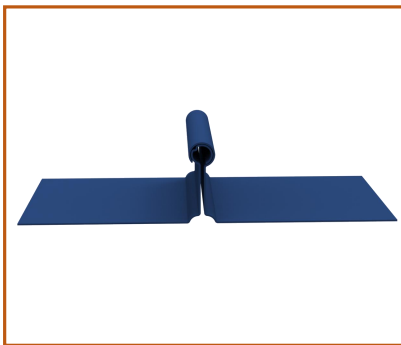
Technical Data

Max Pull Out Load Vertical to Roof:	7.8KN
Screw Tension:	up to 4NM
Ultimate Tensile Strength:	62
Tensile Yield Strength:	42
Fatigue Strength:	100 Mpa
Shear Modulus:	26.0 Gpa
Shear Strength:	205 Mpa
Hardness, Knoop:	21
Hardness, Vickers:	701
Elongation at Break:	0.80%
Modulus of Elasticity:	69.0 Ga



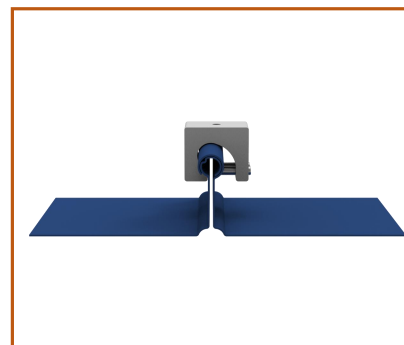
Unit: mm

Quick Installation Guide



Step 1:
Confirm the
round-bulb seams.

PS: Seam width ≤
23mm

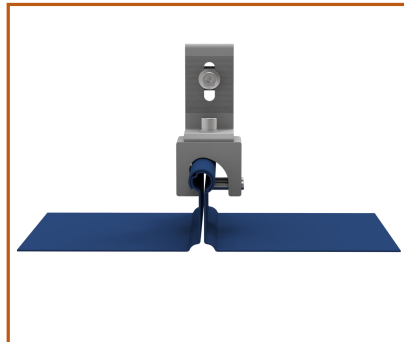


Step 2:
Confirm the Clamp
position and attach
the Clamp on roof
seam.



Step 3:
Fasten clamp on
side with 2 blind
rivets.

Torque value:
12 N.m



Step 4:
Install L feet on
clamp and then
connect rail system.

Torque value:
12 N.m