



AW Ground Solar Mounting System

Cost-effective structure for use in a variety of terrains

Quickly

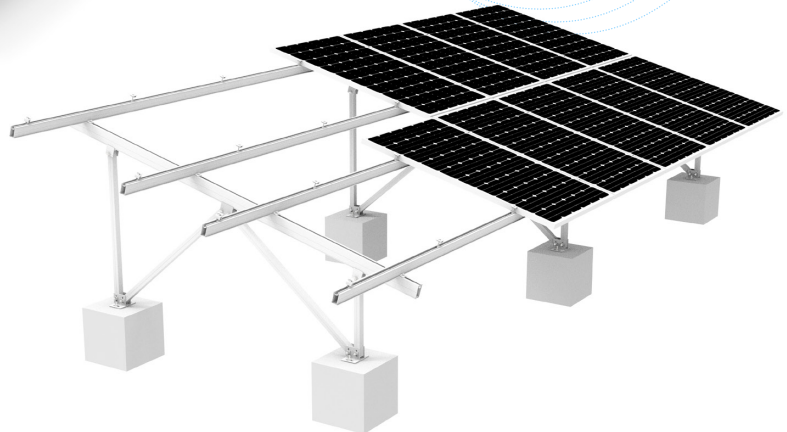
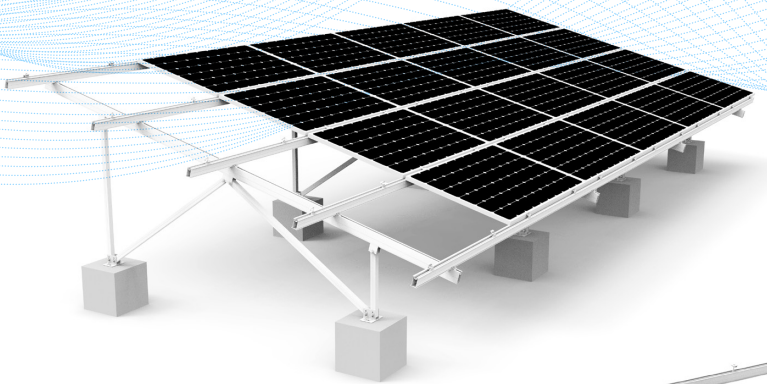
- Automated machine
- Professional assemble team and package team
- Certified production process

Premium materials for choice

- Aluminium 6005
- SUS 304 fasteners

OEM Service

- Customized height
- Customized tilt angles



1

Easiest And Fastest Installation

No drilling or welding required,
parts pre-assembled in advance
Aluminum 6005-T5,
lightweight material

2

Flexibility

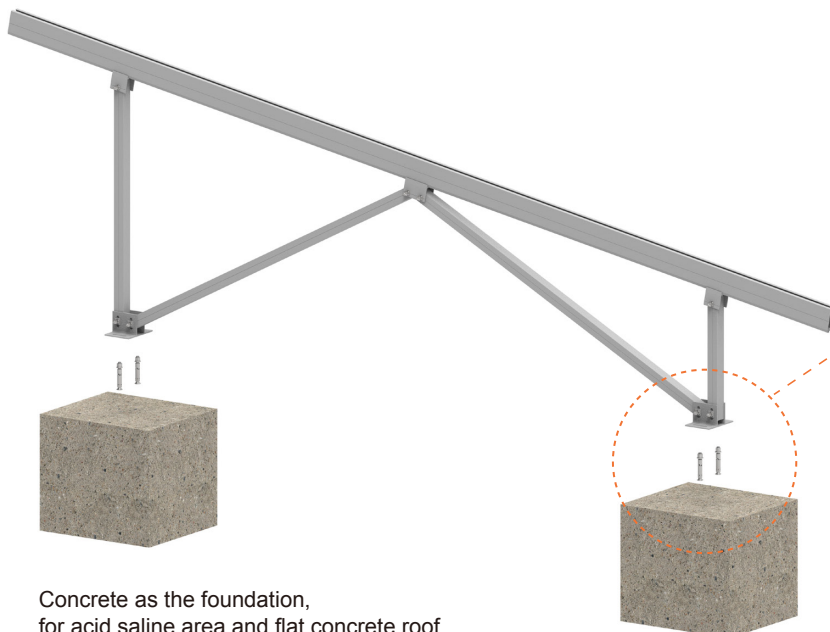
Suitable for flat roof
Suitable for weakly corrosive soils
Landscape and portrait
all workable

3

Strong & Safety

Long-lasting corrosion-
resistant materials
Designed according
to EN1991, high load

AW Leg Installation Display

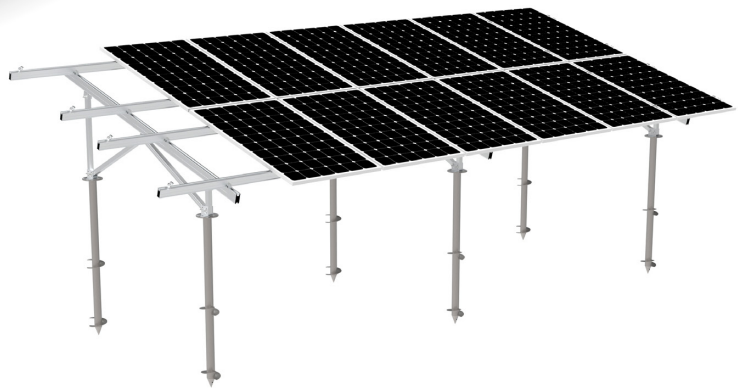
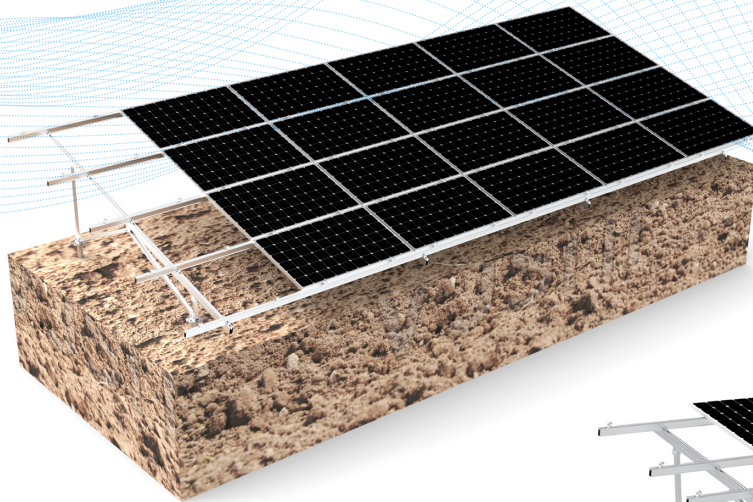


Concrete as the foundation,
for acid saline area and flat concrete roof



Only 2 screws are needed to secure
it to the concrete foundation

GROUNDING SCREW FOUNDATION



1

Easiest And Fastest Installation

No drilling or welding required,
parts pre-assembled in advance
Aluminum 6005-T5,
lightweight material

2

Flexibility

Adapts well to different terrains
Concrete & ground
screws as foundation
Landscape and portrait
all workable

3

Strong & Safety

Long-lasting corrosion
-resistant materials
Designed according
to EN1991, high load

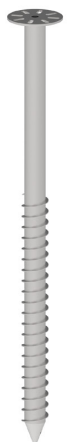
AW Leg Installation Display



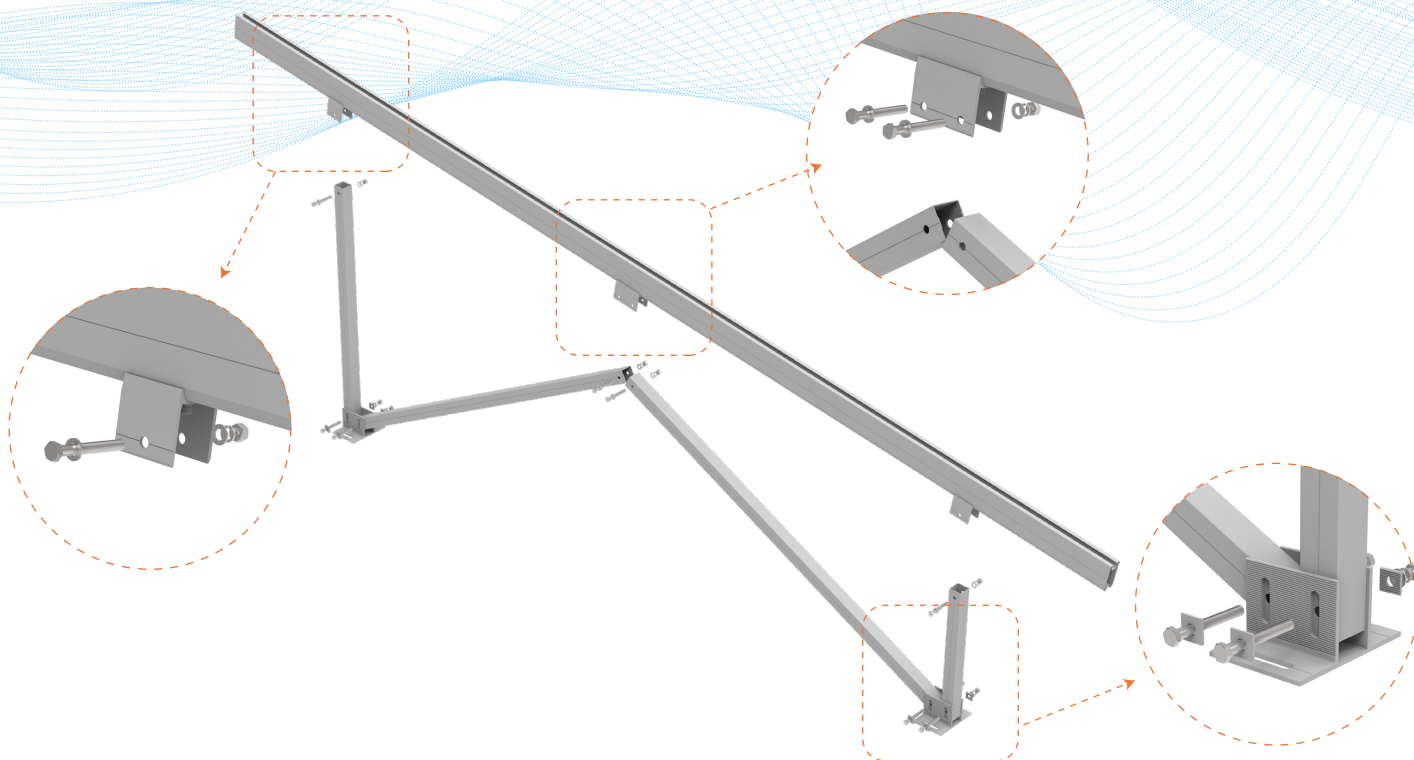
Grounding Screw (option) as the foundation,
for fastest mechanized installation



Spiral ground pile



Blade spiral pile



1

Pre-assembled

AW leg components are pre-assembled in advance, saving labor costs and installation time

2

High load capacity and robust

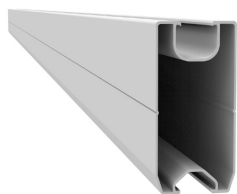
Components use long-lasting, corrosion aluminium process
Material certified to withstand heavy winds and snow

3

Customization

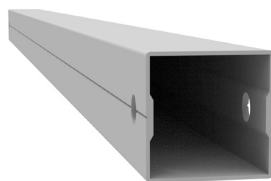
Customized tilt angle
Customized height
Customized size for different areas

AW Leg Components



• **Beam**

For connecting AW Leg, double support



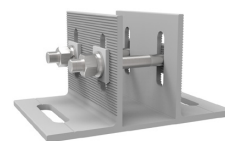
• **Tube**

For connecting AW Leg, double support



• **Rail #9**

For connecting AW Leg, double support



• **Base**

For connecting AW Leg, double support



• **Big Transfer kit**

For connecting Beam and tube



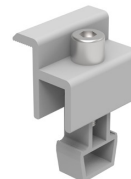
• **Small Transfer Kit**

For connecting Beam and tube



• **Mid Clamp**

For 30-40mm thickness modules



• **End Clamp**

For 30-40mm thickness modules