

SU ground solar mounting system

Cost-effective steel structure for use in a variety of terrains

Quickly

- Automated machine
- Professional assemble team and package team
- Certified production process

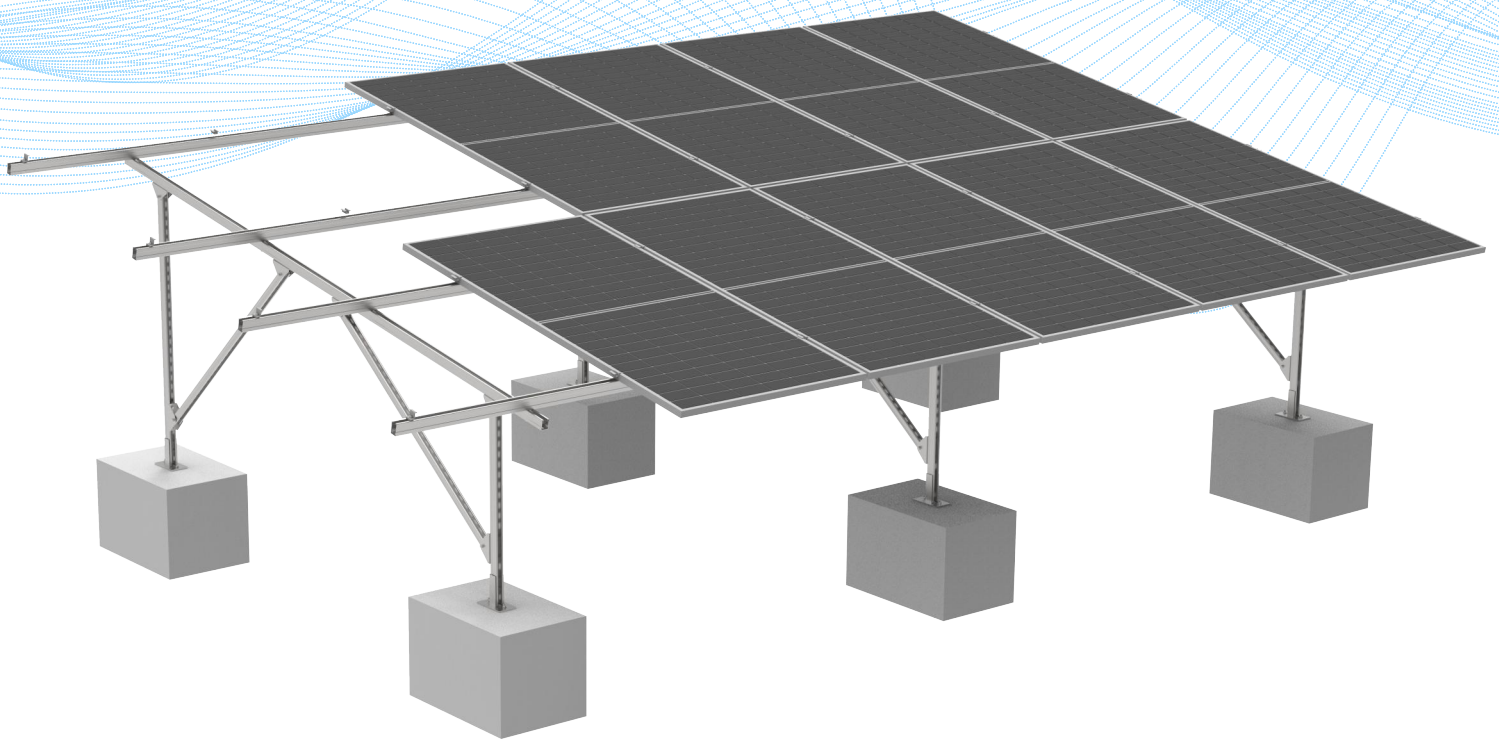
Premium materials for choice

- HDG or MAC
- SUS 304 fasteners

OEM Service

- Customized height
- Customized angles

CONCRETE FOUNDATION



Easy and Fast Installation

No drilling or welding required
Pre-dug holes on the structure

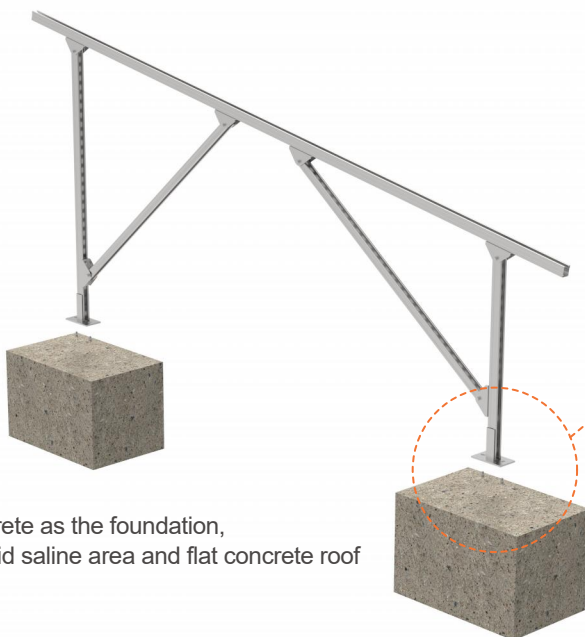
Flexibility

Suitable for hard soil/rock ground
Soft or unstable ground
Highly corrosive soil

Strong&Safety

Long-lasting corrosion-resistant materials
Designed according to EN1991, high load

SU Leg Installation Display

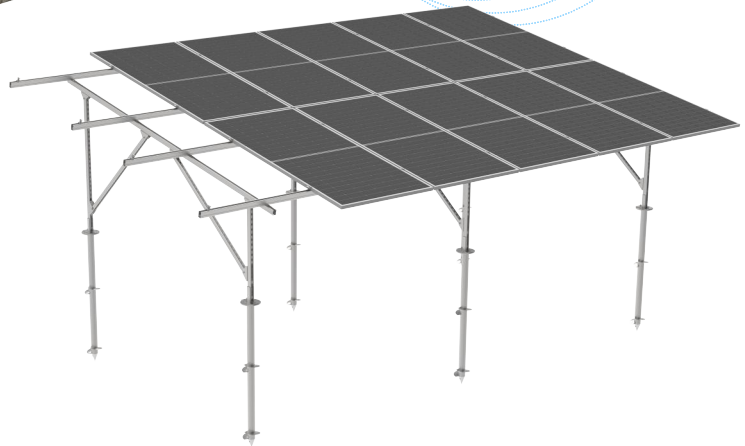
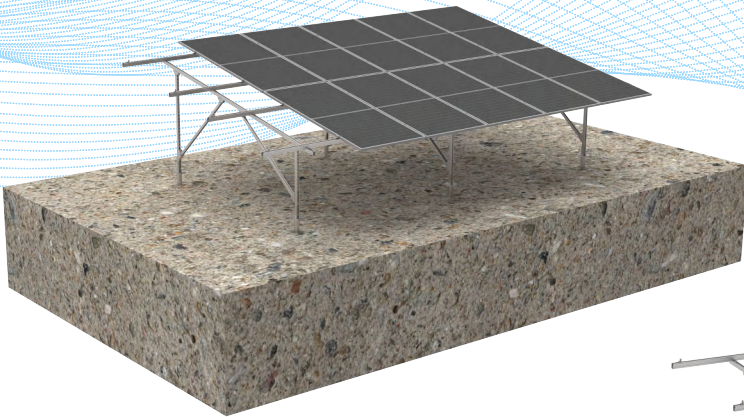


Concrete as the foundation,
for acid saline area and flat concrete roof



Only 2 expand bolts are needed to secure
it to the concrete foundation

GROUNDING SCREW FOUNDATION



Easiest And Fastest Installation

Only one step to fix the foundation
Connect the structure directly on
the grounding screws

Flexibility

Suitable for soft to medium-hard soil
Some stones ground
No massive rocks or
large gravel layers

Strong&Safety

Long-lasting corrosion-
resistant materials
Designed according to
EN1991, high load

SU Leg Installation Display



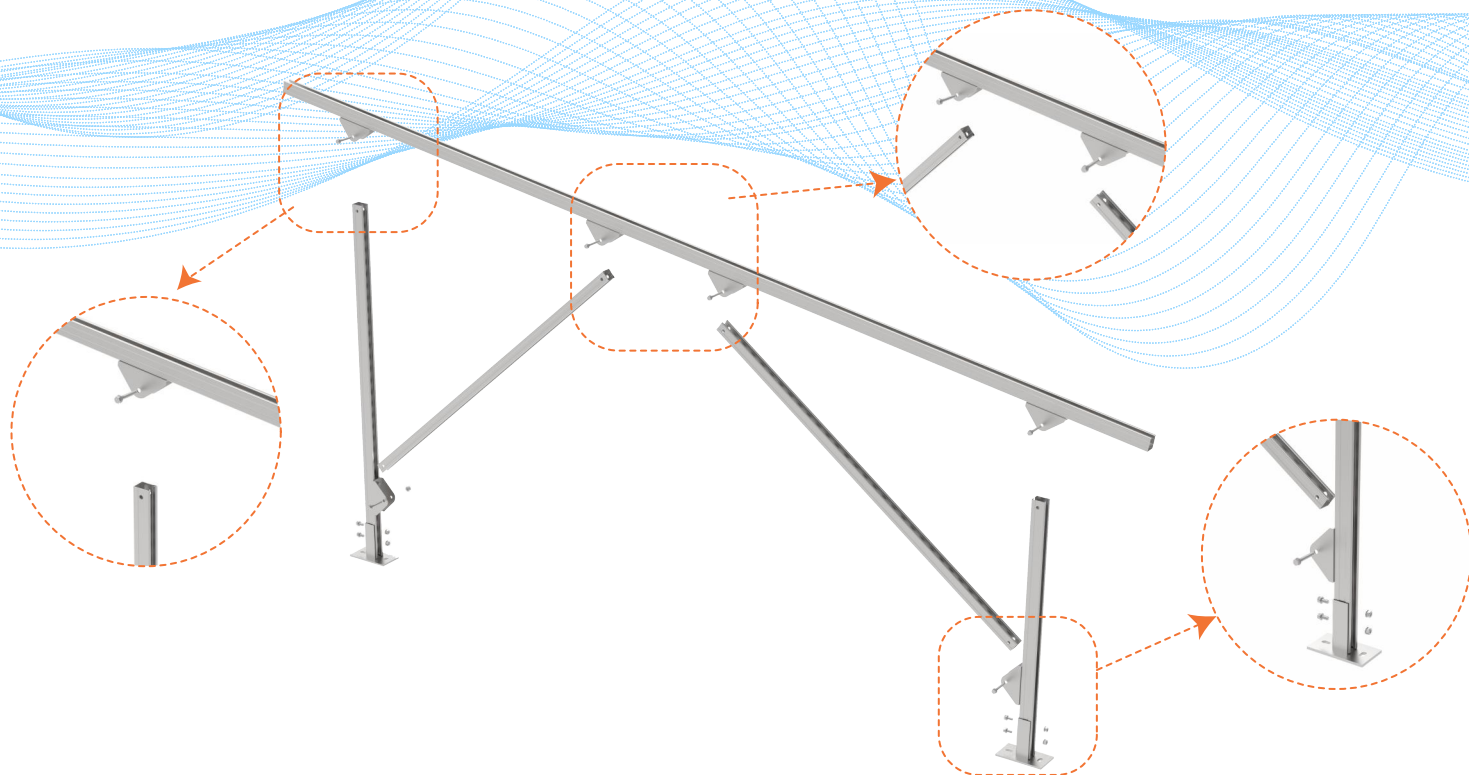
Ground Screw(option) as the foundation,
for fastest mechanized installation



Spiral Ground pile



Blade spiral pile



Cost-effective

Cheaper price than aluminum
but also strong
Suitable for big projects

**High load capacity
and robust**

Components are all in steel,
certified to withdraw heavy winds

Customization

Customized tilt angle
Customized height
Customized size for
different areas

SU Leg Components



• **Beam**

For connecting SU Leg,
double support



• **Connector**

For connecting SU Leg,
double support



• **Brace**

For connecting SU Leg,
double support



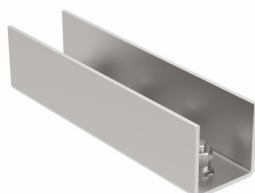
• **U-Purlin**

For connecting SU Leg,
double support



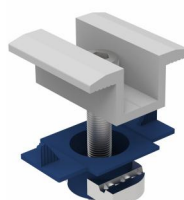
• **Base**

For connecting SU Leg,
double support



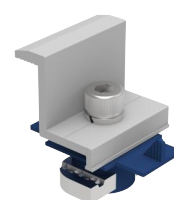
• **Purlin Splice**

For connecting U-purlin
on the beam



• **Mid Clamp**

For 30-35mm thickness
modules



• **End Clamp**

For 30-35mm thickness
modules