



Balcony Solar Bracket Mounting System

Easy and adjustable

Easy kits for 1 panel

- Pre-installed components
- Few components for 1 panel

Easy to distribute

- Installation time saving
- Convenient package
- Universal fitting

Adjustable

- Obtain maximum power
- From 25 deg to 40 deg



Good Efficiency

1 Adjustable angle to get rich power

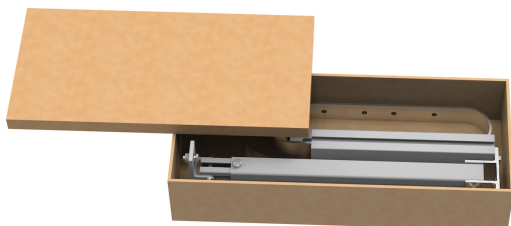
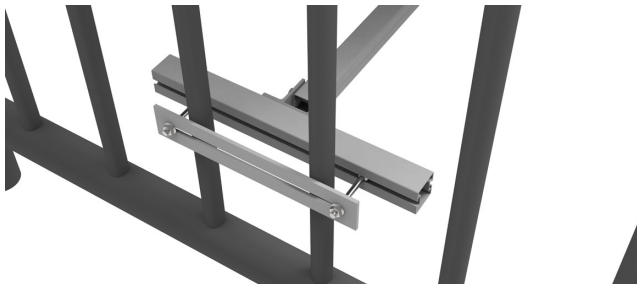
Universal

2 This system can fit most balconies by adjustable leg

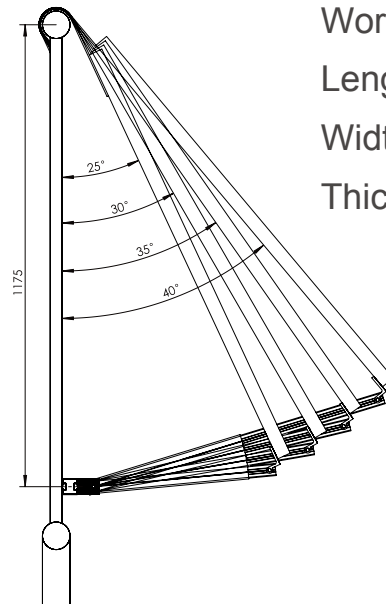
Angle Degree

3 Achieve 25-40 degree for mounting tile angle

Display



Technical Data



Workable for:

Length: <2200mm

Width: <1303mm

Thickness: 30-50mm



1

Easy Handle

Easy to make fast installation
Easy to make stock to distribute
All components in 1 box

2

Flexibility

DIY for home
25-40 adjustable degree
Silver or black

3

Fewer Components

Only few components required
Cost-effective

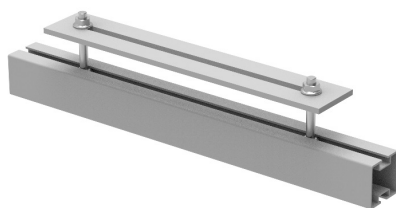
Components List



• **WQ-SH-81**
Balcony Mount
Hook 81#



• **WQ-BK-RL-340-S**
Silver Adjustable Rear
Leg Balcony Kit 340



• **WQ-BBS-S**
Silver Back Balcony
Support Kit

Item	Quantity	Color
Hook	2	Silver
Rear Leg	2	Silver or black
Support Kit	2	Silver or black



Easy&Fast

- 1 Pre-assembled components
Save labor and time cost

Stable&Flexible

- 2 Flexible usage on flat railing
and balcony
Triangular structure ensures the
system strong stability

Convenient Transport

- 3 Few components
Easy transportation
Pre-assembled

Display



PV panel strongly installed on triangular structure



Triangular structure can also be used on small flat area