

## INSTALLATION MANUAL

SINGLE-SIDED STEEL CARPORT MOUNTING SYSTEM

<b>General</b>	01
<b>Tools overview</b>	02
<b>Parts overview</b>	03
<b>Components</b>	04
<b>Steps for installing mounting system</b>	05
• Concrete foundation and fix the base pole	05
• Fix support beam and connect C-purlin	06
• Fix C-purlins	07
• Option1:no waterproof, install panels directly	08
• Option2: waterproof, install vertical sink rail	10
• Fix the caps	15
• Option: waterproof with Edging	16

## Quality tested-several certifications

WOCHN Systems stands for secure connections, highest quality and precision. Our customers and business partners have known that for a long time. Independent institutes have tested, confirmed and certified our capabilities and components

Please find our quality and product certificates under:

<https://www.wochnmounting.com/>

## Disclaimer

This manual describes the proper installation procedures and provides minimum standard required for product reliability and warranty. This installation instruction is based on the state of the art and many years of experience in how our systems can be installed on site. Due to the many variables and requirements associated with a specific installation. Because of this, these instructions only serve as a guideline for the installation of the product described in this manual.

.....

- The equipment may only be installed and operated by **qualified and adequately trained installers.**
- Prior to installation, ensure that the product complies with on-site static loading requirements
- National and local building regulations and environmental requirements must be adhered to.
- All work must comply with national, state and local installation procedures, product and safety standards.
- Compliance with health and safety regulations, accident prevention guidelines and applicable standards is required.
- Protective equipment such as safety helmet, boots and gloves must be worn.
- Validate foundation parameters prior to installation, We recommend consulting with a local engineer familiar with local regulations and build site requirements, including soil conditions, terrain and load criteria. All parameters may impact foundation requirements.
- At least two people must be present for the duration of the installation work in order to provide rapid assistance in the event of an emergency.
- At least one copy of the assembly instructions should be available on site throughout the duration of the installation.
- Failure to adhere to our general safety and assembly instructions and not using all system components, WOCHN is not liable for any resulting defects or damages. We do not accept liability for any damage resulting in the **use of competitor's parts. Warranty is excluded in such cases.**
- Dismantling of the system is performed in reverse order to the assembly.
- The manual provides guidelines for installation, but it does not guarantee the quality of installation work. Please complete the installation in a responsible and professional manner.



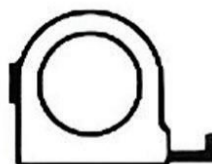
6.3、8、12、16、20



10mm



6.3、8、12、16、20



### Torque Values

Base pole and concrete foundation fix, 180N · m

Base pole and support beam fix, 100N · m

Purlin connector and purlin fix, 40N · m

Purlins and support beams fix, 40N · m

Sink pad, sink rail and purlin fix, 10N · m

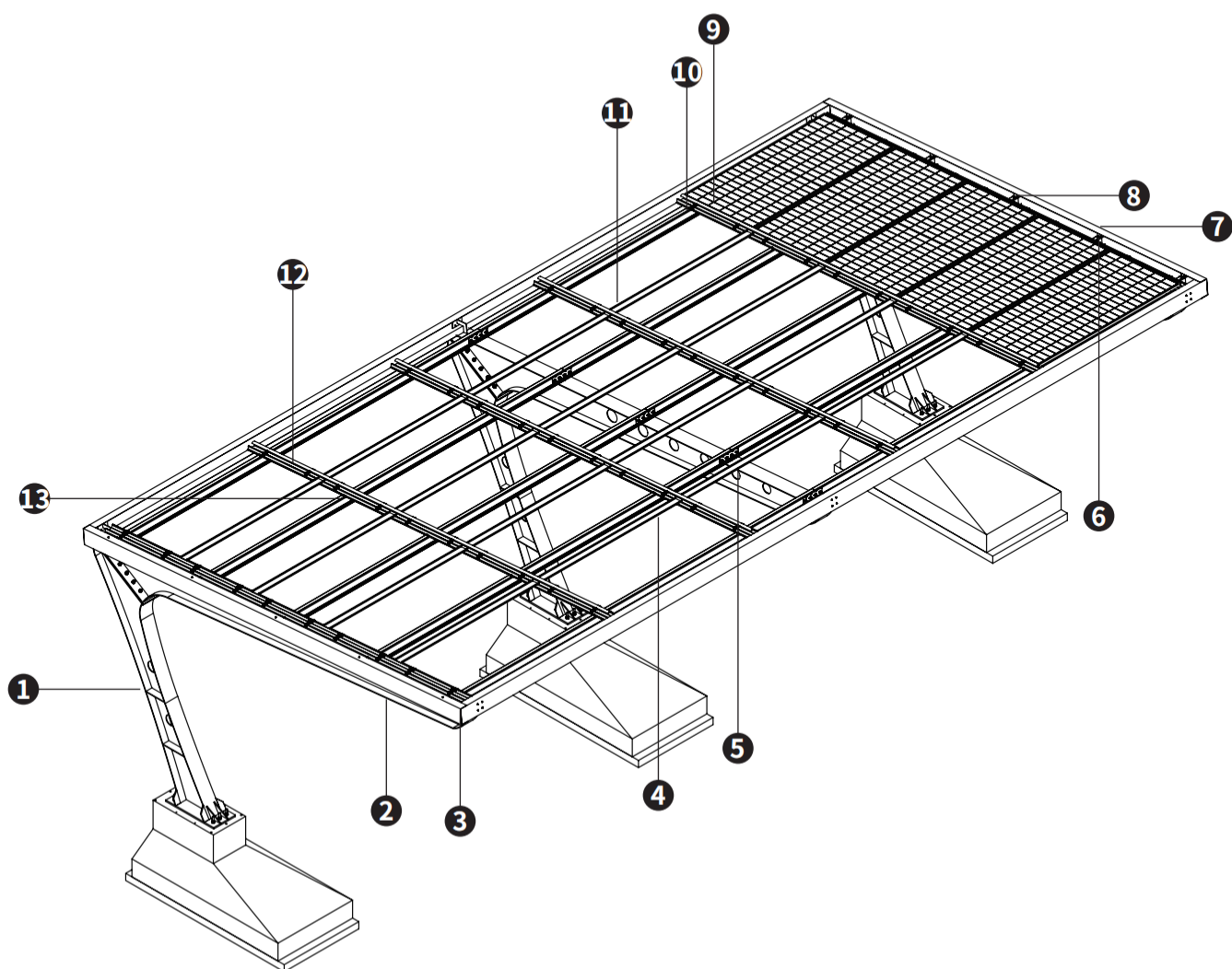
Sink rail and sink kit fix, 10N · m

Mid clamp and end clamp fix, 10N · m

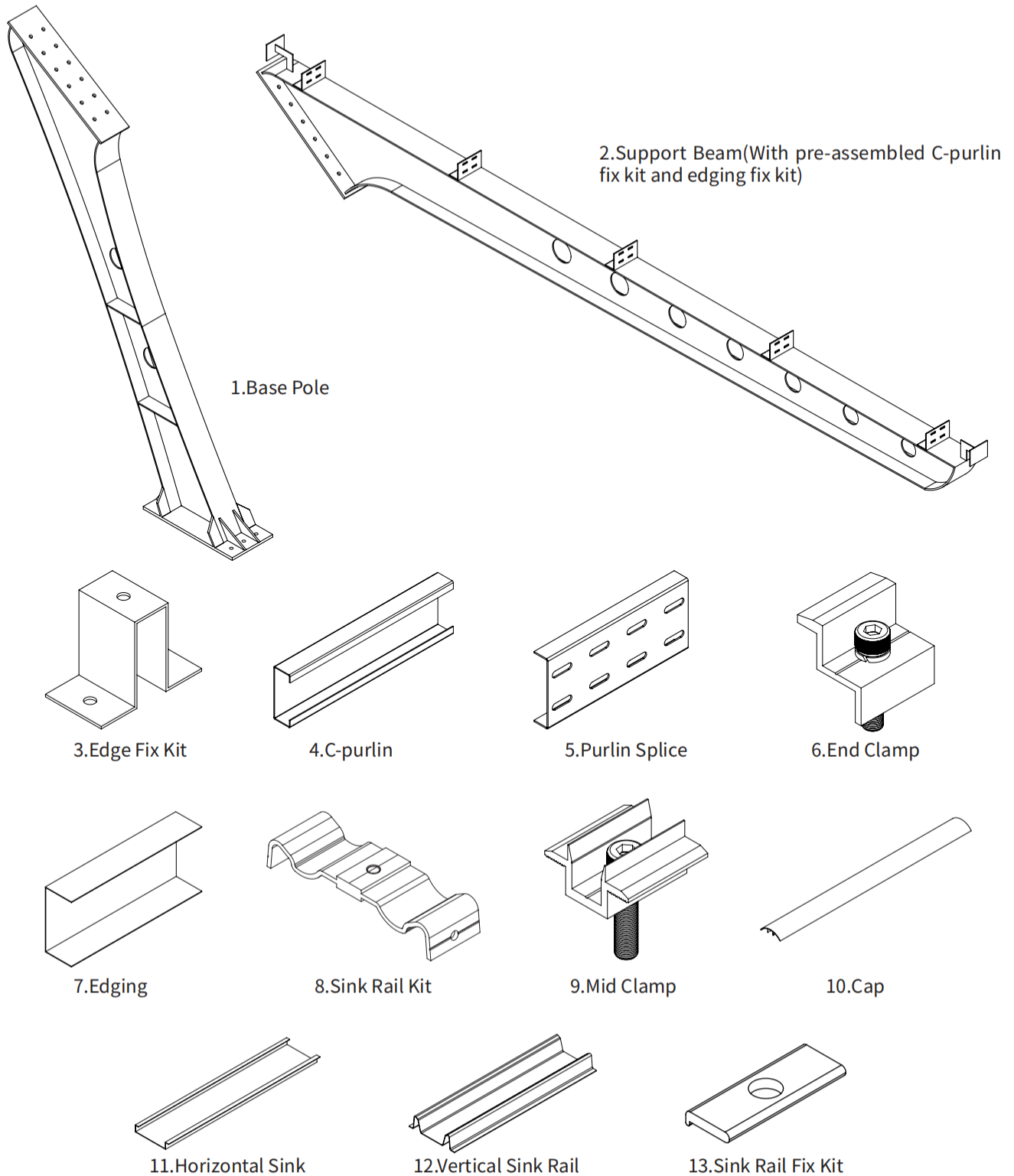
Edging fix, 10N · m



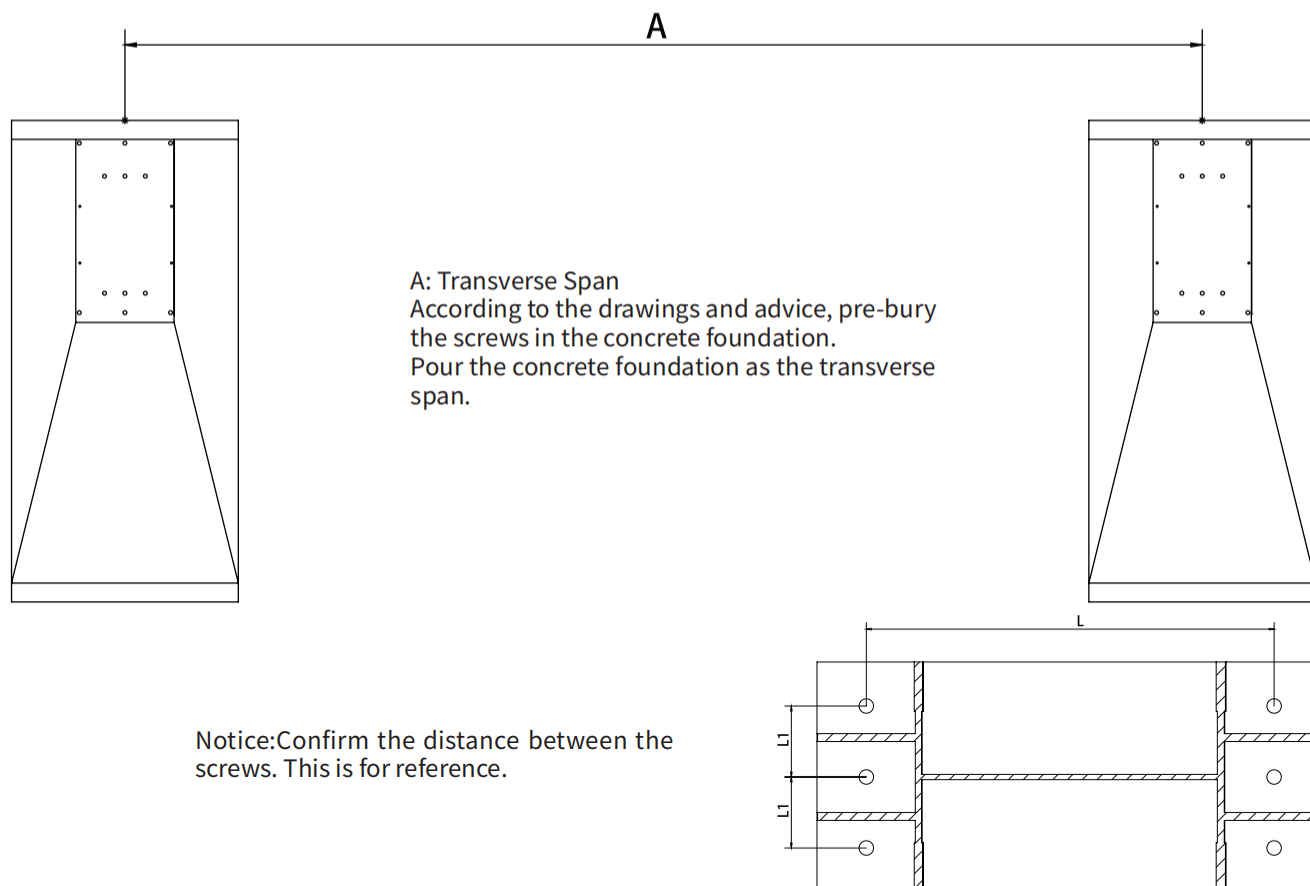
## 1.PARTS OVERVIEW



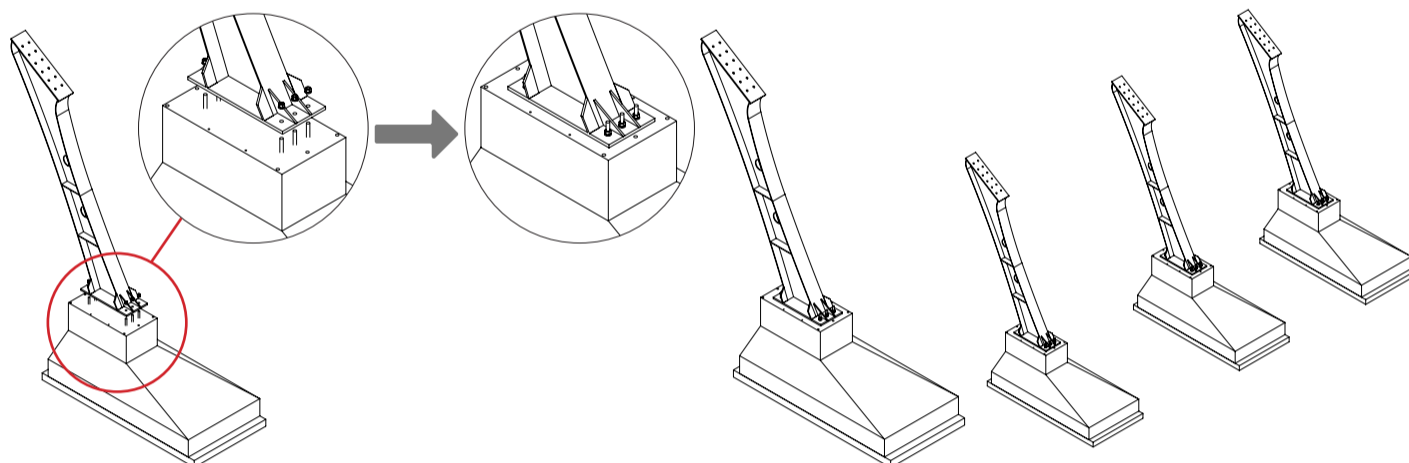
## 2.Components



## 1.Pre-bury M22 screws in the concrete foundation before install the system

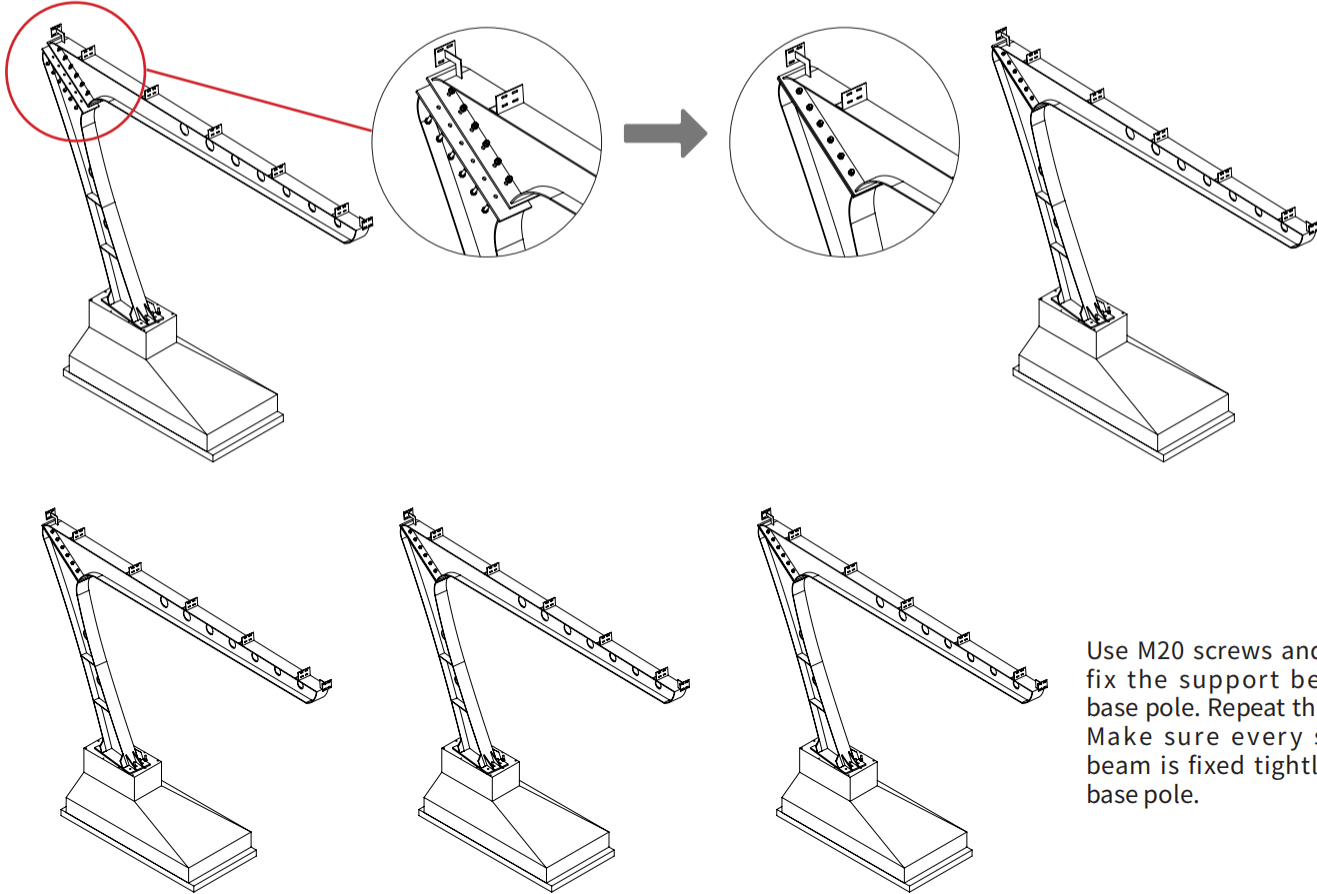


## 2.Fix the Base Pole on Foundation



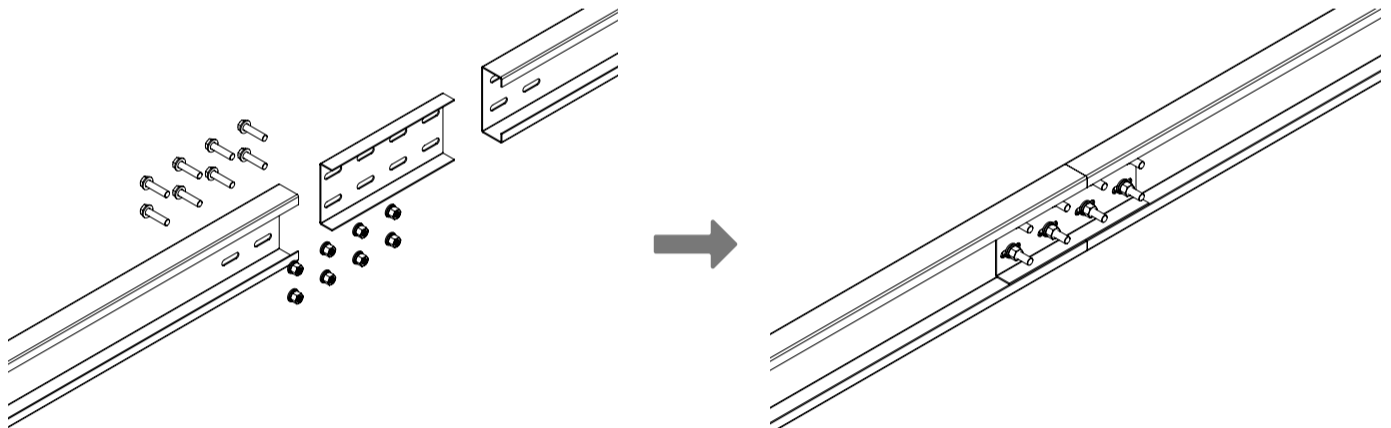
Use M22 nuts with pre-buried M22 screws to fix the base pole. Repeat this action. Make sure every base pole is fixed tightly on the concrete foundation.

### 3. Fix the Support Beam on the Base Pole



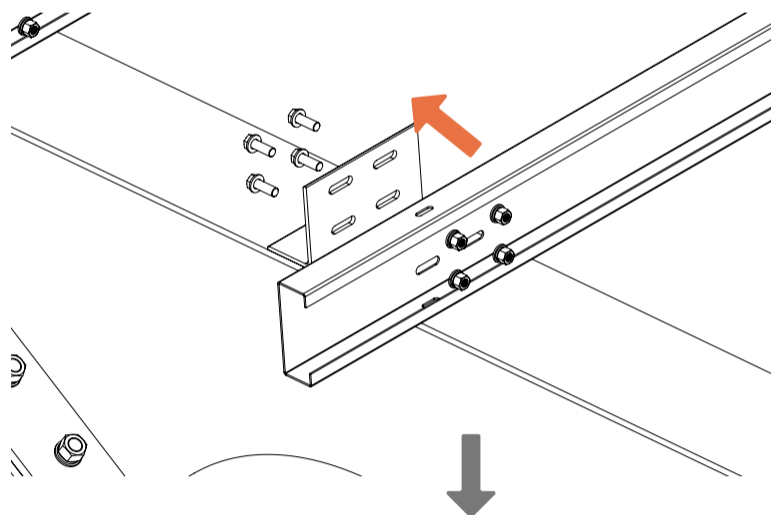
Use M20 screws and nuts to fix the support beam and base pole. Repeat this action. Make sure every support beam is fixed tightly on the base pole.

### 4. Connect the C-purlins

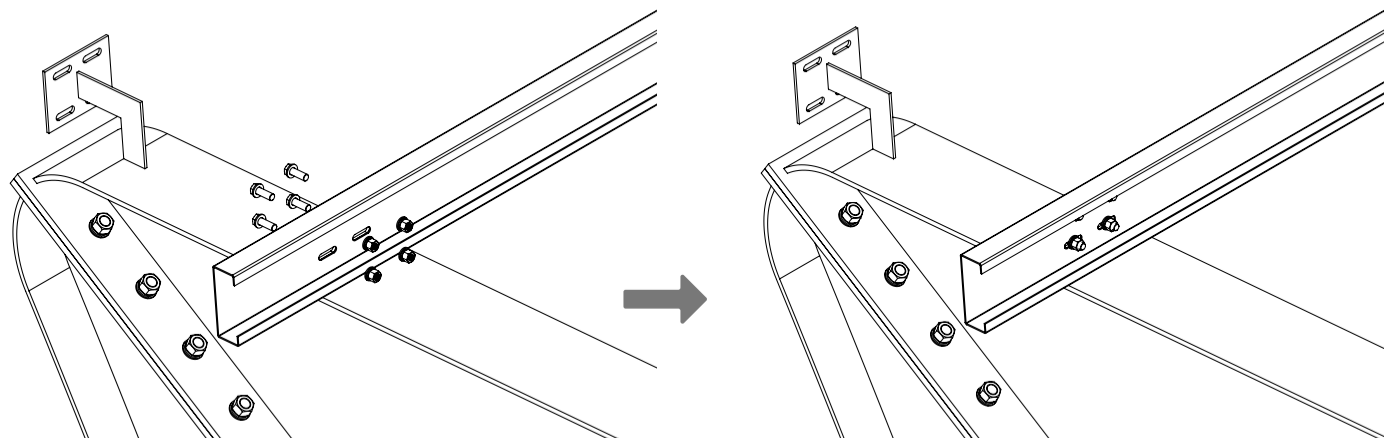


Use purlin splice with 8PCS M12 screws and nuts to connect the C-purlins. Repeat this action. Make sure the C-purlins are connected by the splice correctly.

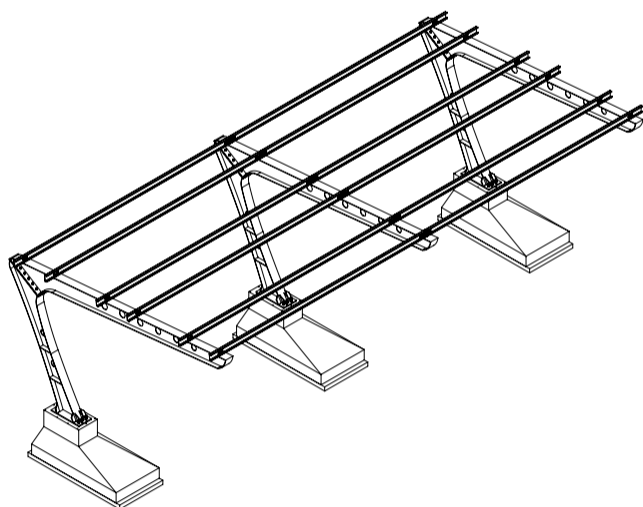
## 5. Fix the C-purlins on Support Beams



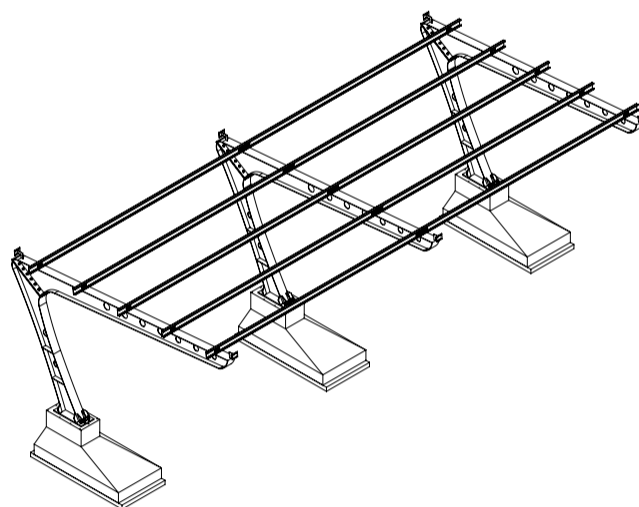
Use M12 screws and nuts fix the C-purlins on support beams. Follow the position of pre-assembled C-purlin fix kit on the support beam. Make sure every C-purlin is fixed tightly and correctly.



For no-waterproof carport, please refer to step 6. If waterproof carport, please refer to step 7



No-waterproof carport preview

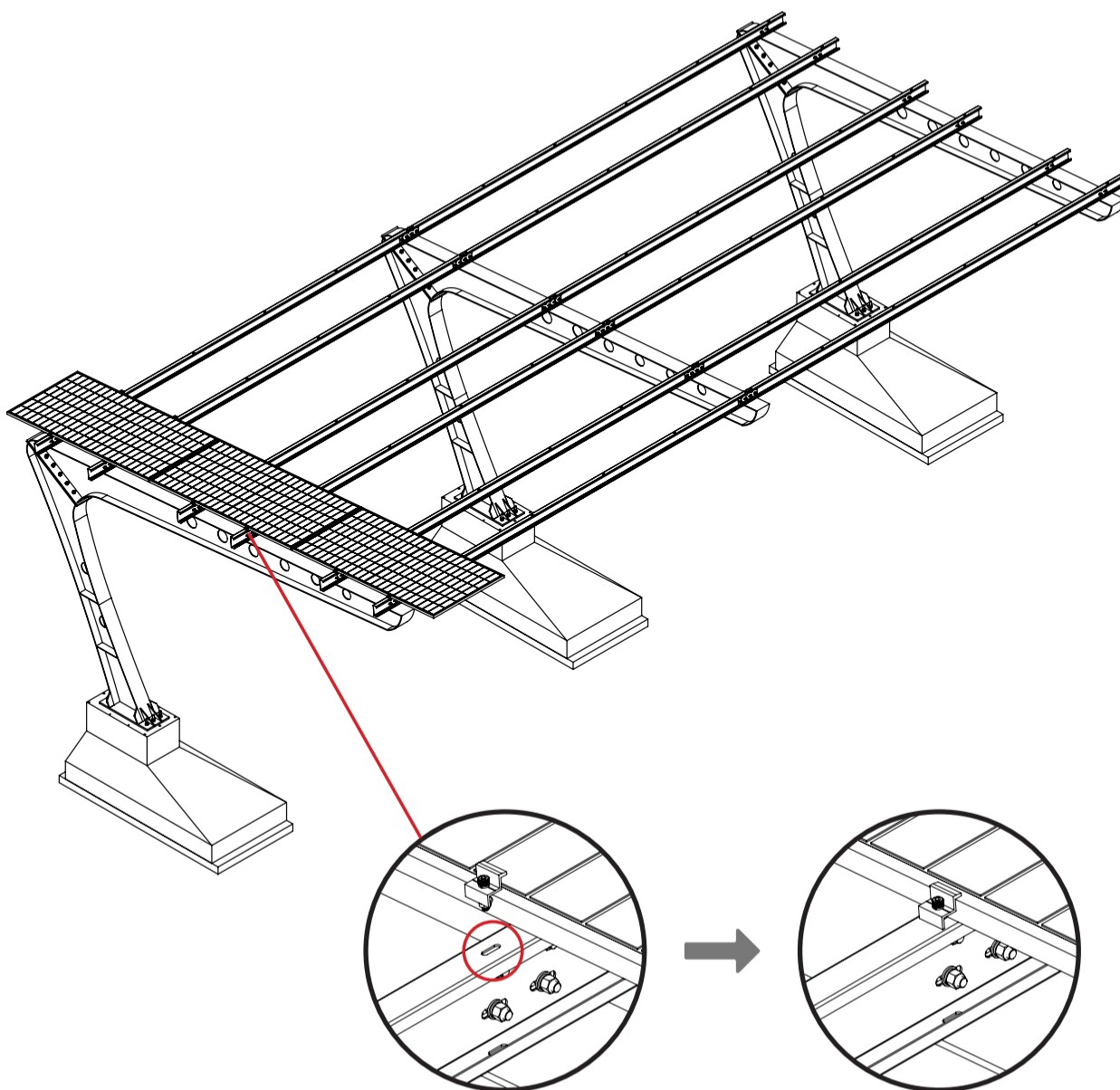


Waterproof carport preview

## 6.Option1: No-waterproof, install the panel directly

6.1 Confirm the position of the starting hole on C-purlin follow the drawings

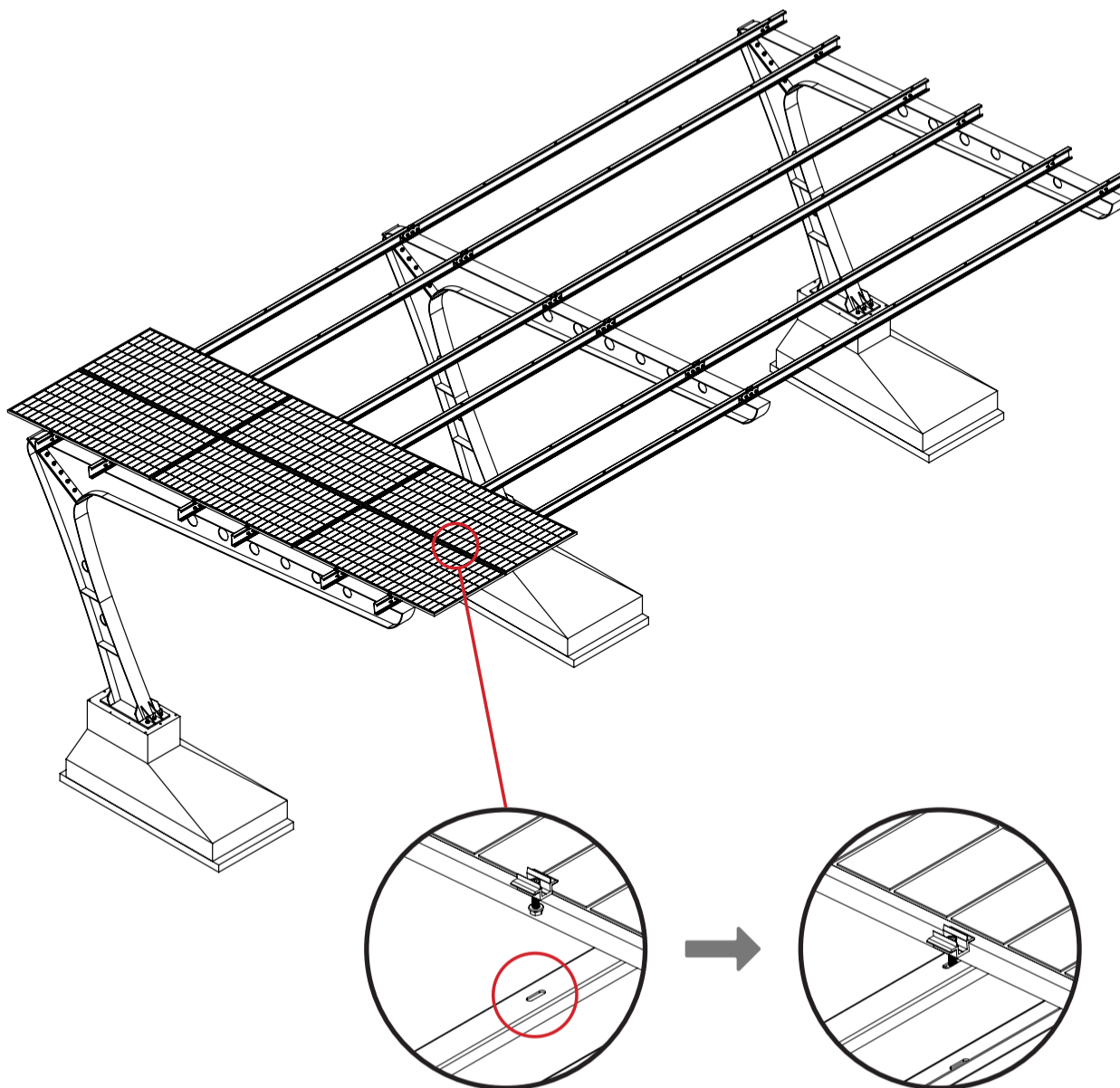
6.2 Put the first panel on the starting hole, meantime fix with end clamps



Notice: the hole will be pre-digged on C-purlin

## 6.Option1: No-waterproof, install the panel directly

6.3 Then install the second panel with mid clamp, and repeat this step until final panel installed

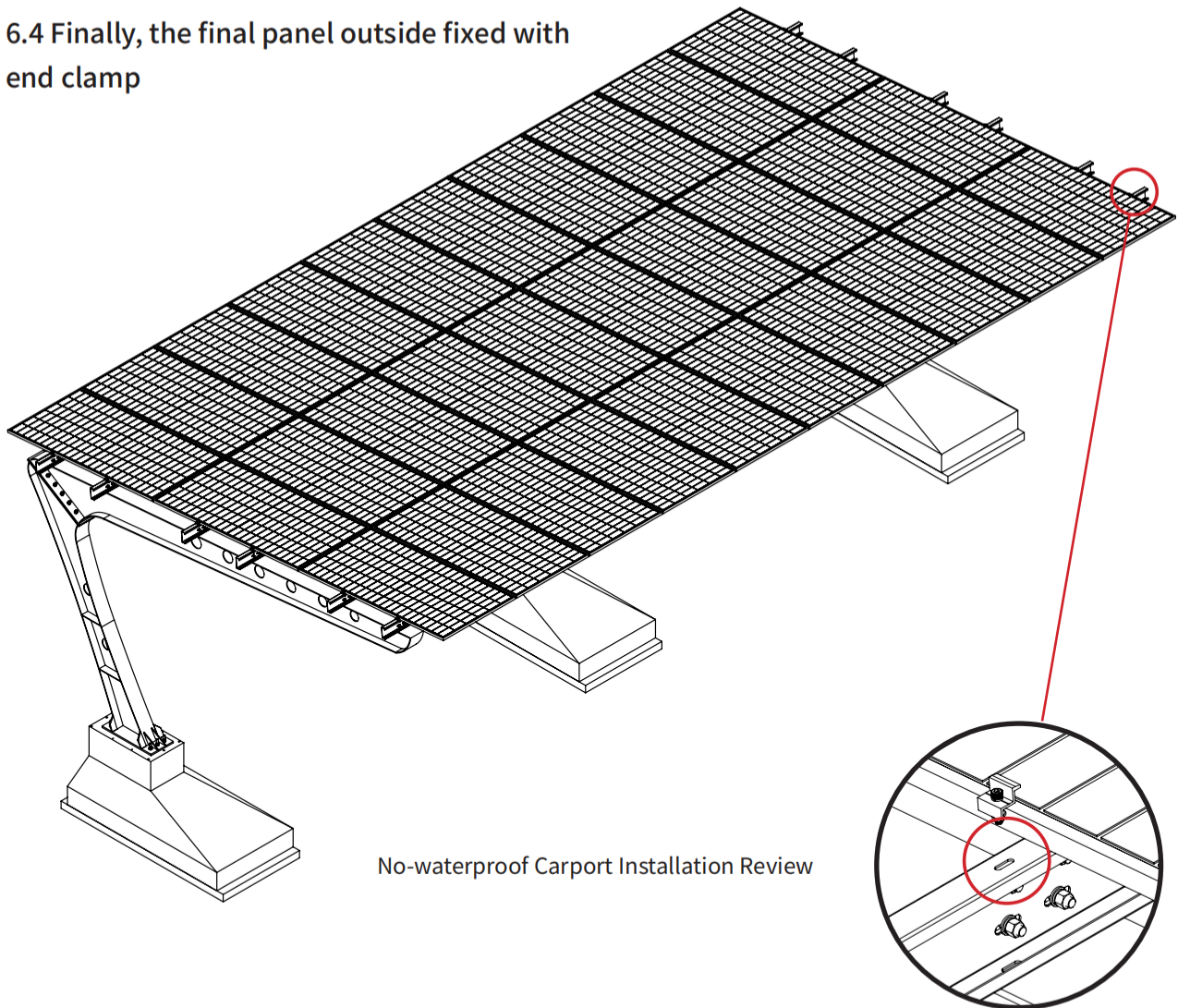


Notice: the hole will be pre-digged on C-purlin



## 6.Option1: No-waterproof, install the panel directly

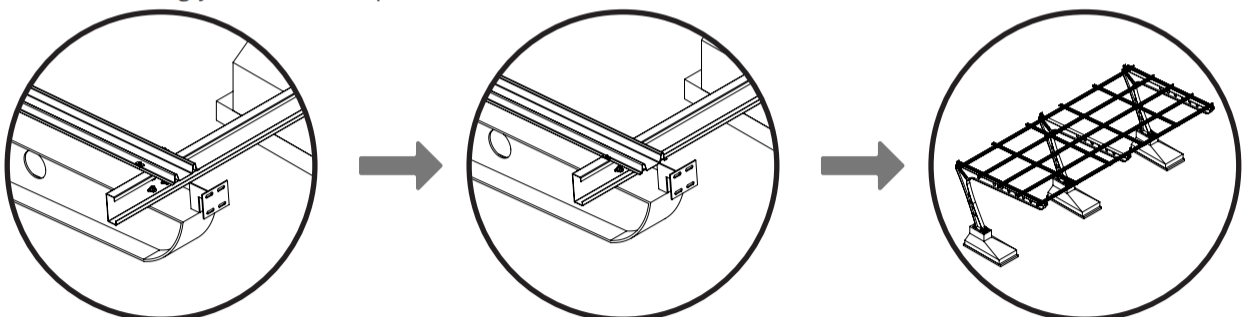
6.4 Finally, the final panel outside fixed with end clamp



## 7.Option2: Waterproof of the system:

### 7.1 Install Vertical Sink Rail, firstly

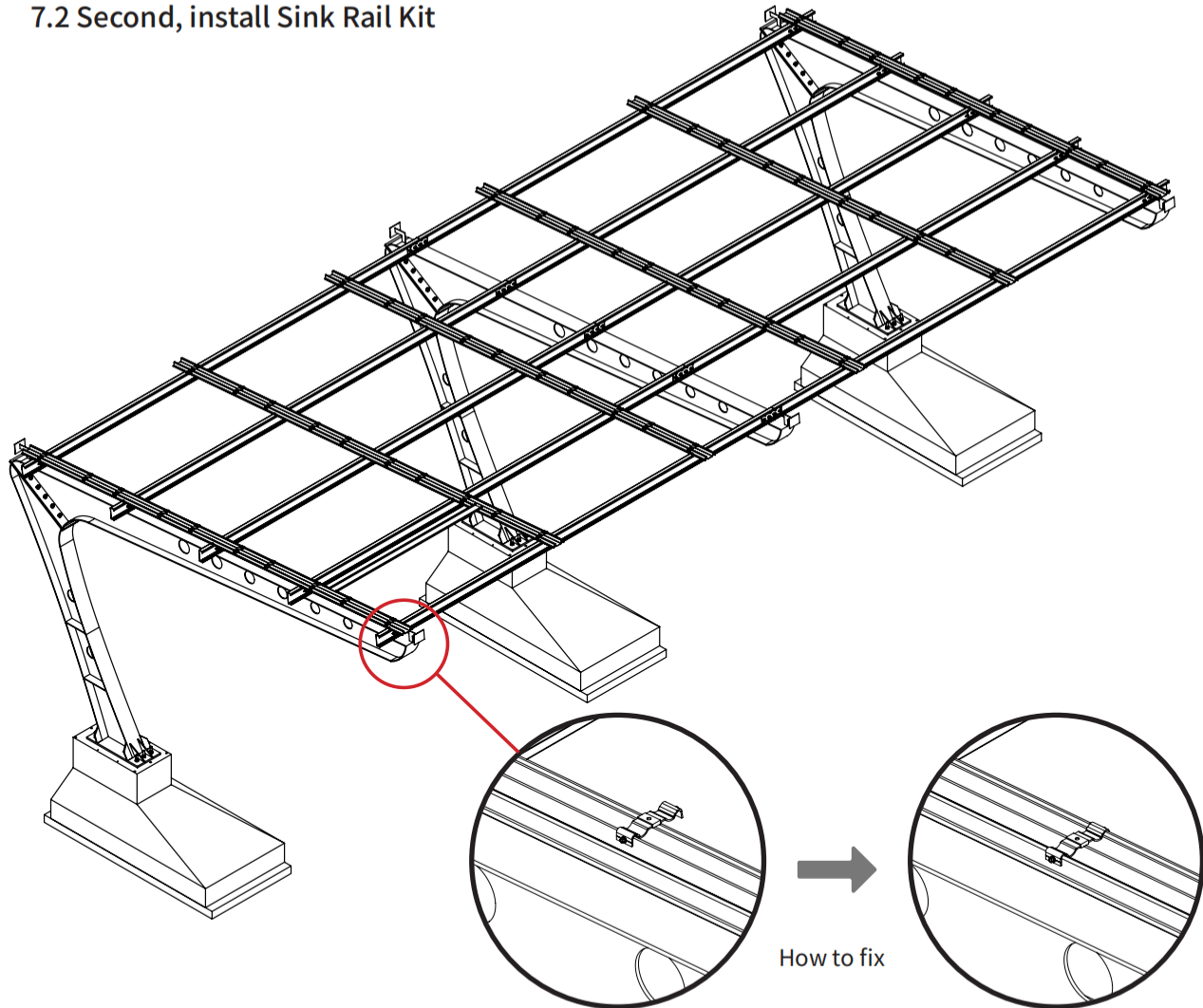
Use M6.3 screws with sink rail fix kit to fix the Vertical Sink Rail on C-purlins. Repeat this action. Make sure every sink rail is strongly fixed on the C-purlin.





## 7.Option2: Waterproof of the system:

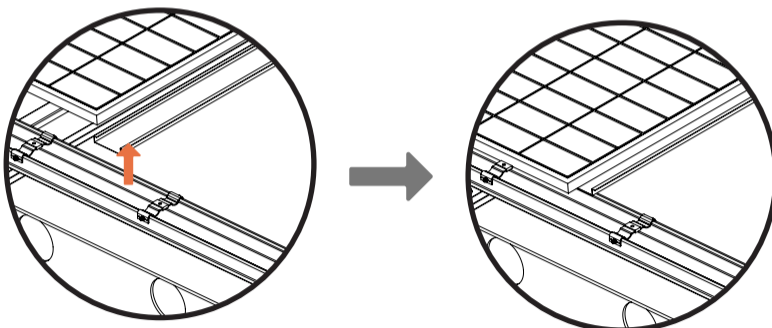
### 7.2 Second, install Sink Rail Kit



## 7.Option2: Waterproof of the system:

### 7.3 Fix the panels with Horizontal Sink Rail, meantime with clamps

7.3-1 Put the panel on horizontal sink rail with sink rail kits which fixed before

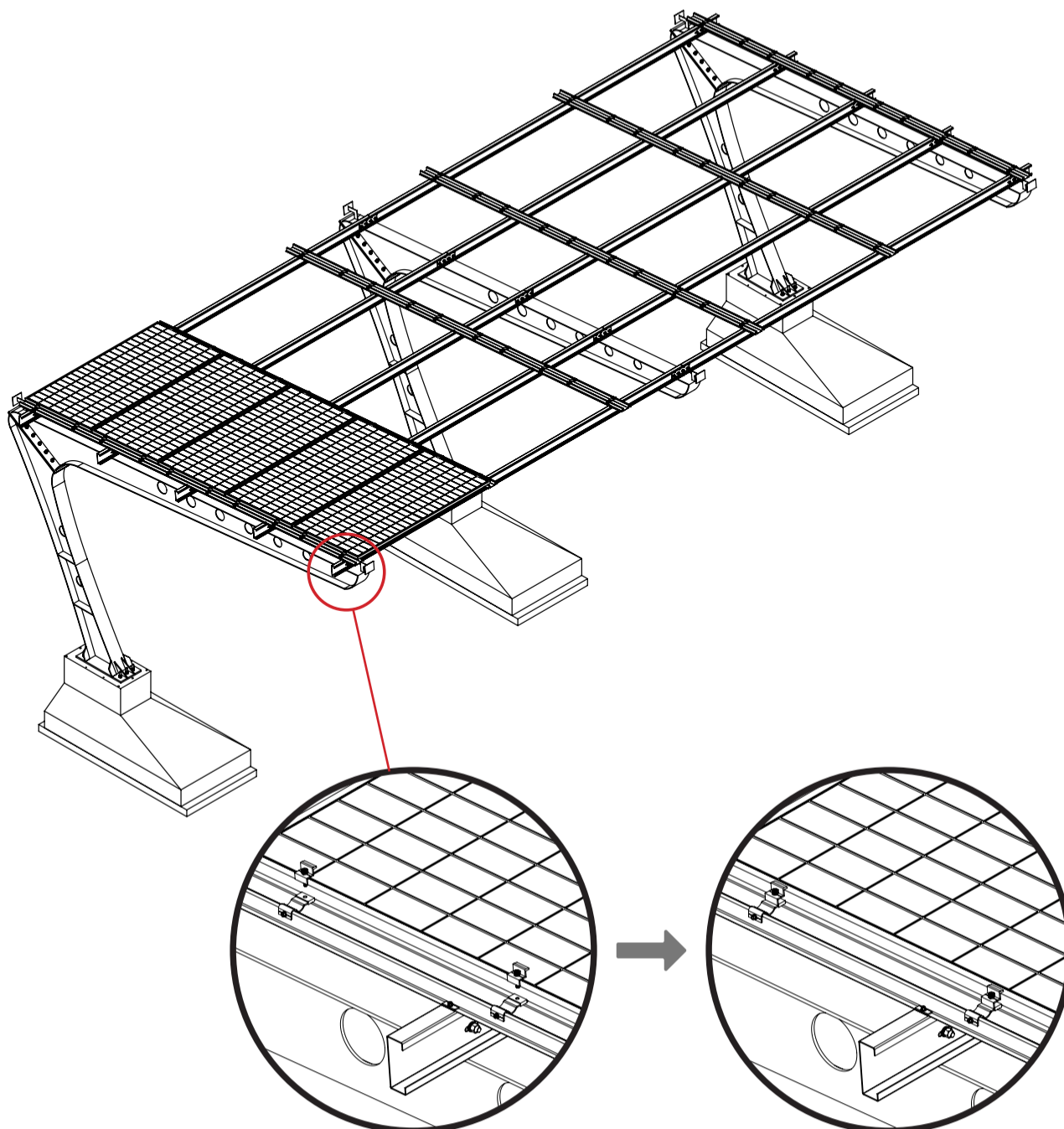


Fix the outside of the panel first. Put the horizontal sink rail under the edge of the panel and fix the panel inside with horizontal sink rail together.

Notice: Fix one horizontal sink when install one piece of panel

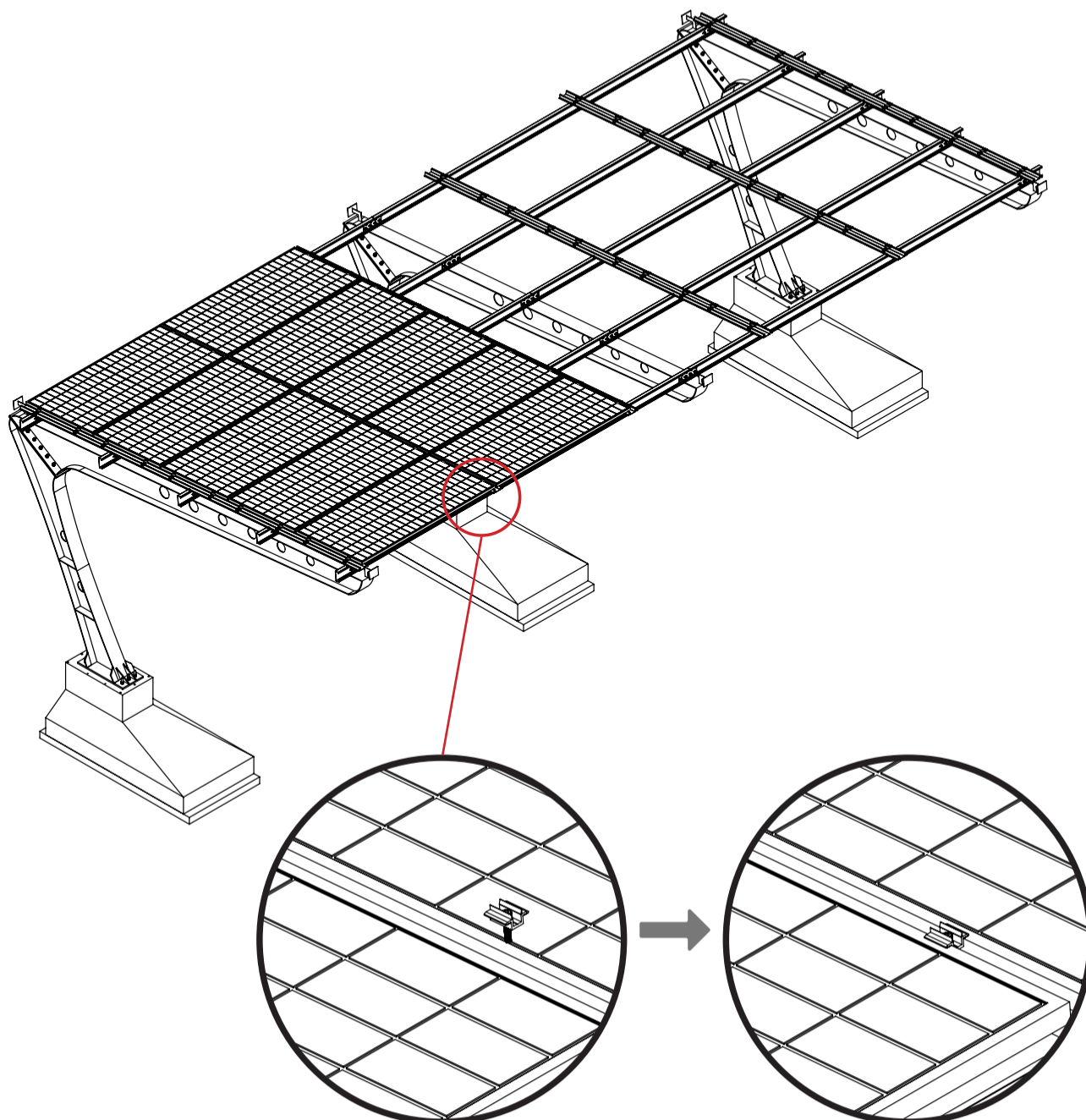
## 7.Option2: Waterproof of the system:

7.3-2 After that, fix the first panel with End clamp to sink rail kits.



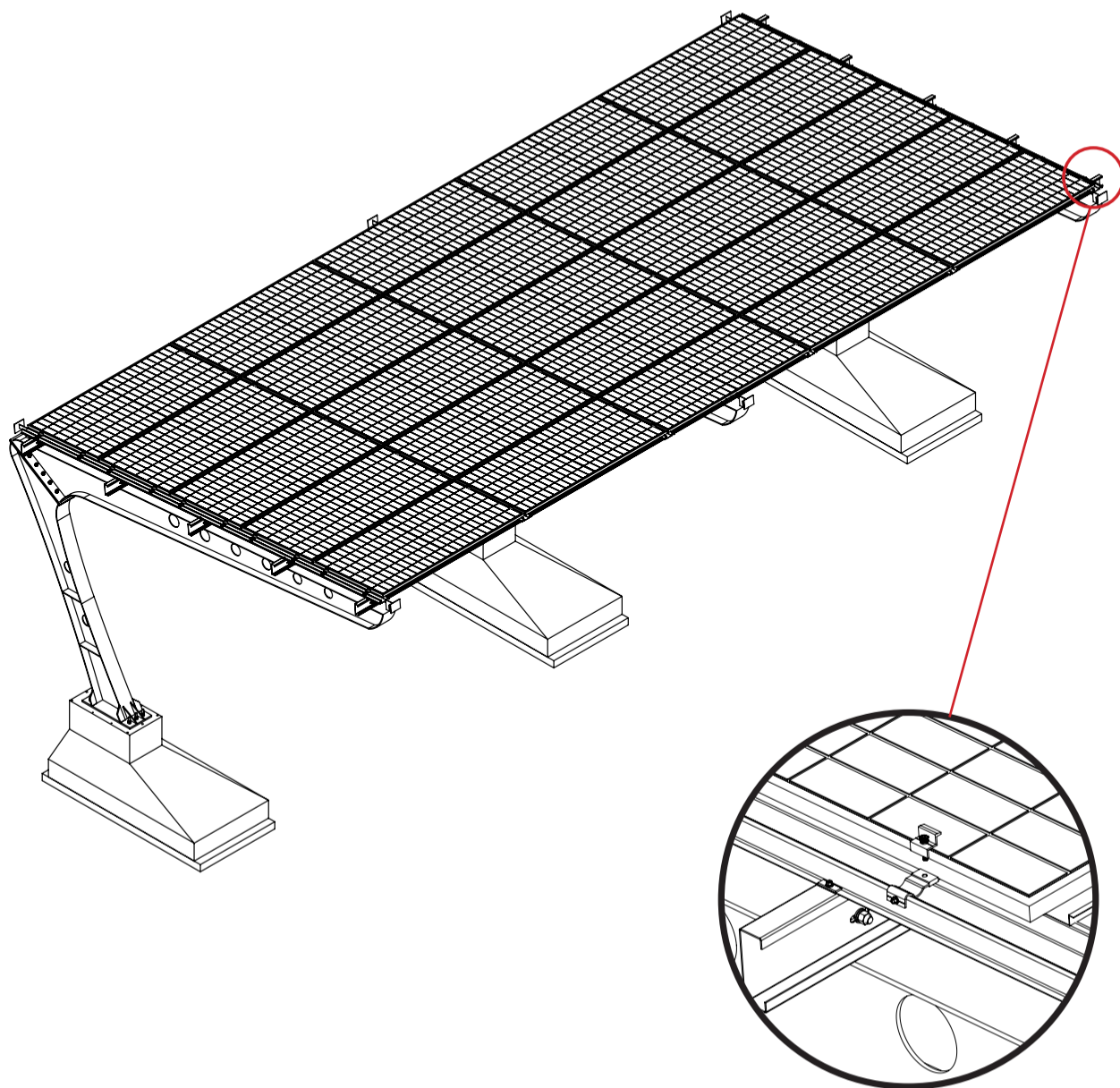
## 7.Option2: Waterproof of the system:

7.3-3 After install first panel, then install next panel follow 7.2 and 7.3.1 to fix, use mid clamp to fix the panel, repeat this until last panel installed.



## 7.Option2: Waterproof of the system:

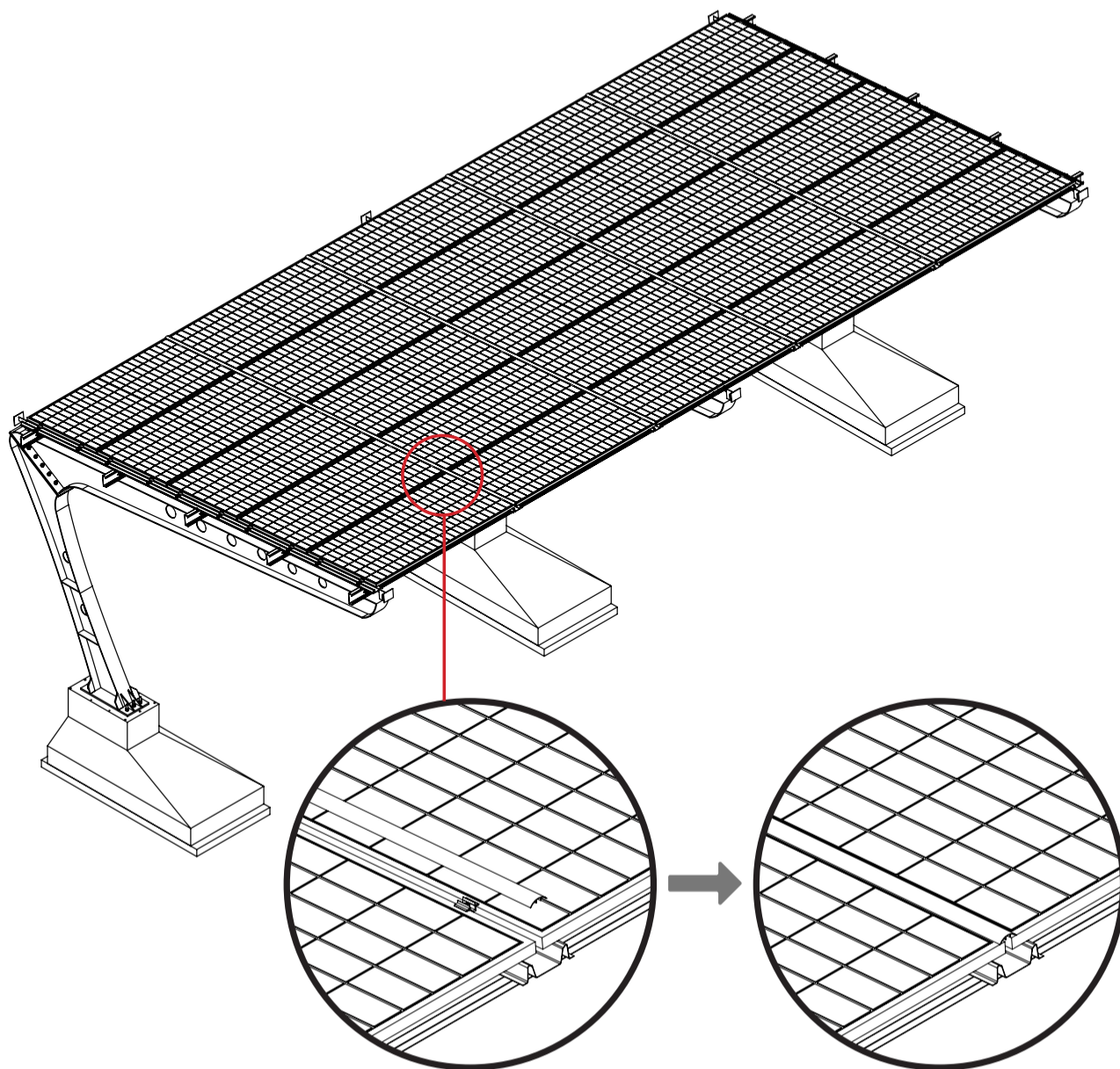
7.3-4 Finally, the final panel outside fixed with end clamp



## 7.Option2: Waterproof of the system:

### 7.4 Fix the Caps on the panels

Fix the cap in the middle of panel where the Mid clamp installed, repeat this, to ensure all mid clamp will be covered by cap

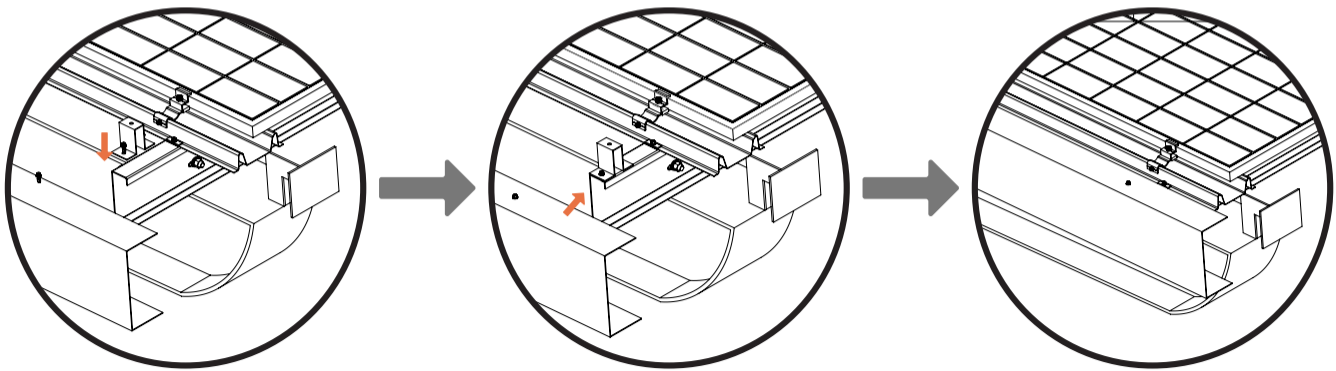




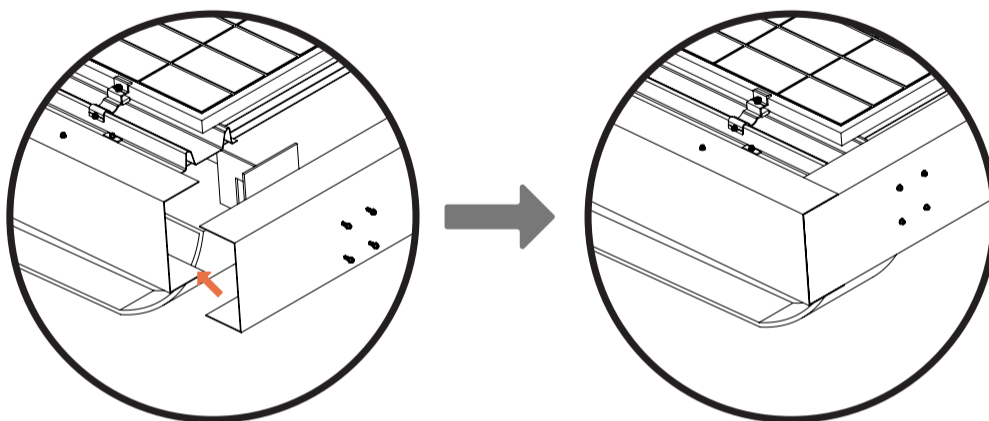
## 7.5 Option: Waterproof Carport with Edging

7.5-1 Use M6.3 screws to fix the edge fix kit on C-purlins where end clamp side

7.5-2 Then fix the left edging to that kits.

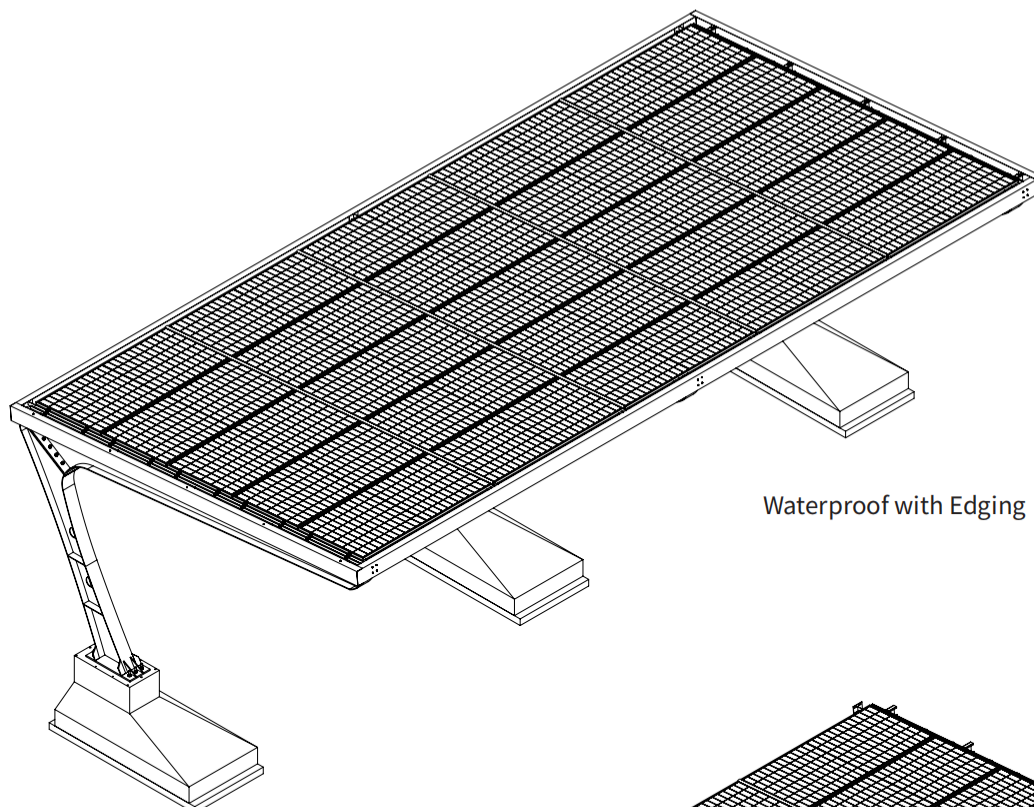


7.5-3 Follow the pre-assembled pad on the support beam, use M6.3 screws to fix the other edging on the support beam.

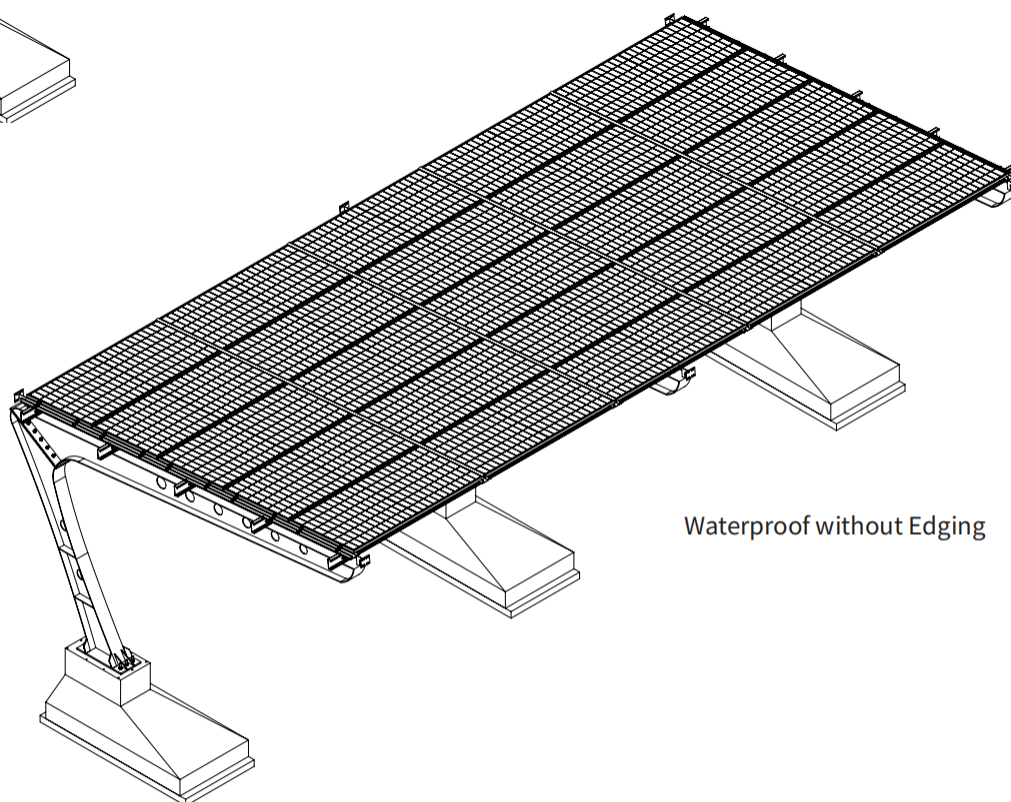


## 8. Final installation check

Make sure all components are securely fastened. Verify that the Carport Solar Mounting system is installed correctly, reaches the required of designed.



Waterproof with Edging



Waterproof without Edging