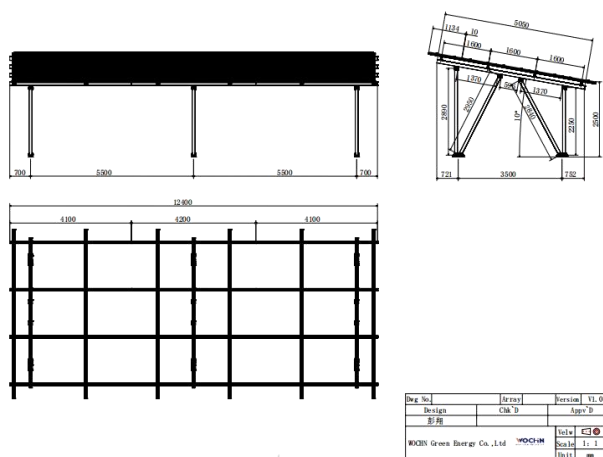


Water-proof

- With 2 directions conduct water rail, all water flow into conduct rail, and flow out in bottom side
- Portrait conduct water rail
- Landscape conduct water rail



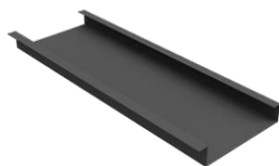
Standard or customized design

- WOCHN design the standard mounting solution for 2 cars and 4 cars spacing
- Customized also available for big commercial car

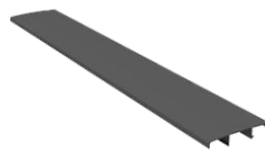
Components



Vertical Sink Rail



Horizontal Sink Kit



Cap



Beam



TR Rail



Tube



Base Kit



Transfer Kit



Rail Splice



Mid Clamp



End Clamp



Ground Kit

Technical Data

Product name	AWC Car Park Mount System
Application	Ground and flat concrete concrete roof
Inclination	Fixed 10/15/20/25/30 deg or customized
Material	Aluminum 6005 T5
Finish	Anodized clear, average 12um
PV module	Framed or Unframed
Module size	Small and Big modules
Module orientation	1/2/3 panels Portrait
Module direction	South , North
Design wind loading	Up to 60m/s
Design snow loading	Up to 1 metre
Roof height	Up to 20 metre
Design Standard	EN1991, AS1170,UL1703,JIS C 8955:2011,CE,TUV