

AWC Car Park Mount System

Water proof,
strong and beauty

Quickly

- Automated production line
- Professional package team
- Certified production process

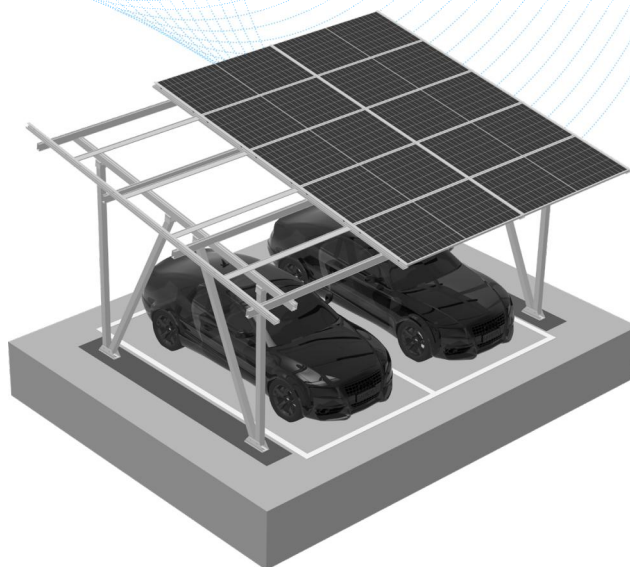
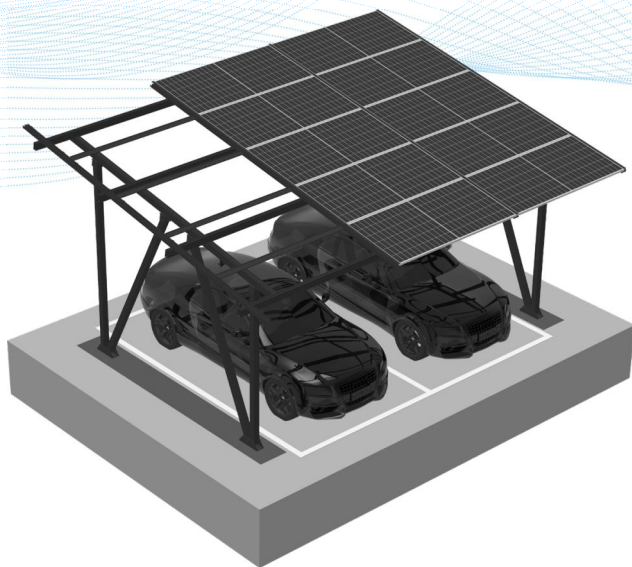
Premium Materials

- Anodized Al6005-T5
- SUS 304 fasteners

Standard or OEM Service

- Standard or Customized parking space
- Standard or Customized sizes

STANDARD 2 CARS PARKING FOR RESIDENT



1

Standard or Customized

Standard 2 cars parking
Customized height, tilt angle and
cars spacing are available

2

Waterproof

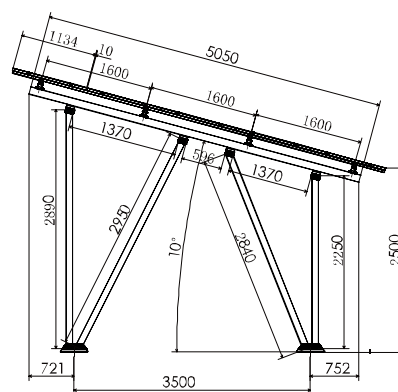
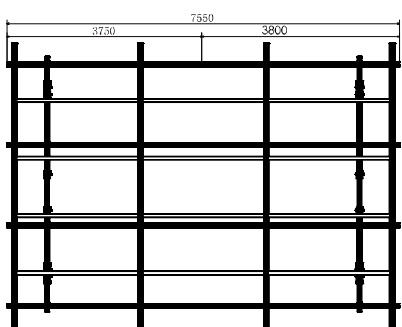
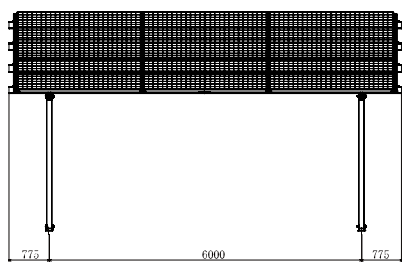
With 2 directions conduct water rail ,
all water flow into conduct rail,
and flow out in bottom side

3

Strong & Beauty

Strong load capacity
Available in silver or black
Enclose cover kits around

Standard 2 Cars Parking Space Drawings

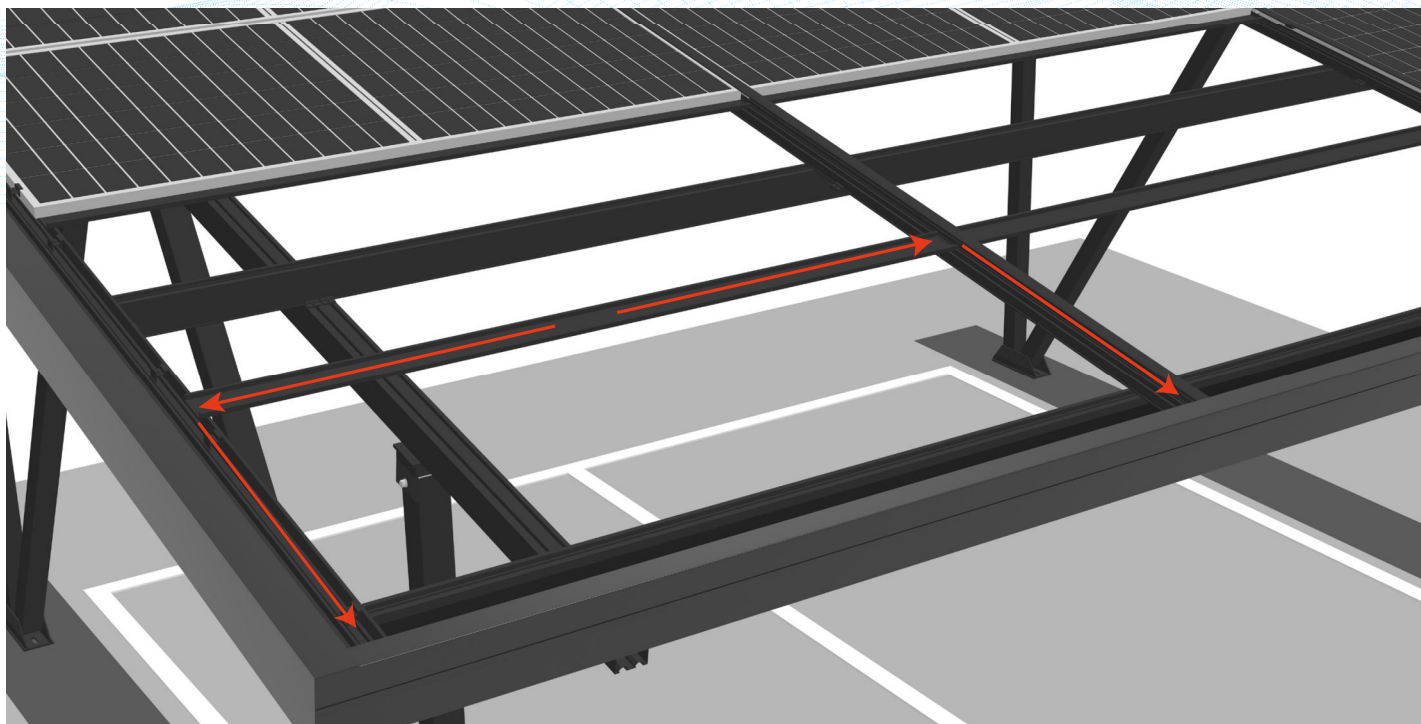


Workable Solar Panels

Panel Length	2200-2400mm
Panel Width	1000-1134mm
Panel Thickness	30-40mm

Technical Data

Wind load	60m/s
Minimum height	2500mm or customized
Install angle	10°



Waterproof Kits Integrated

- 1 Portrait conduct water rail
Landscape conduct water rail
All water flow into conduct rail,
and flow out in bottom side

Safety

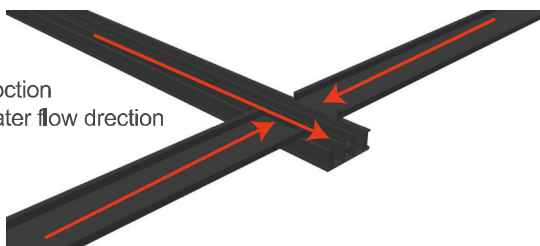
- 2 No water flow into carport bottom
Protect cars from expose
to the weather
Improve solar system safety

Friendly

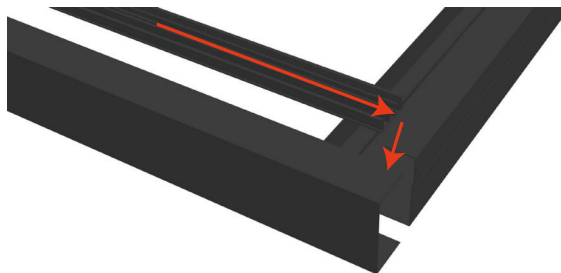
- 3 Protect driver from bad
weather when car parking

Water Proof

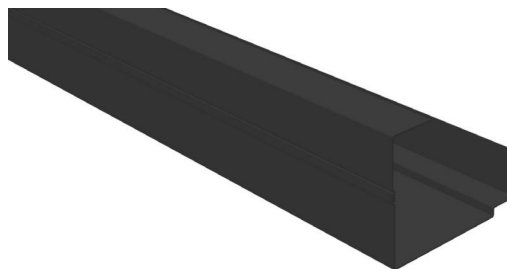
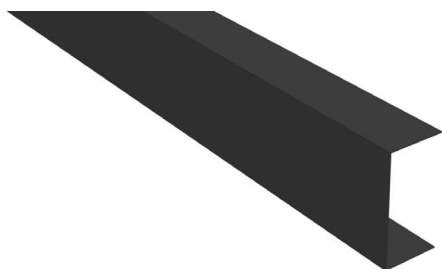
Arrow direction
means water flow direction



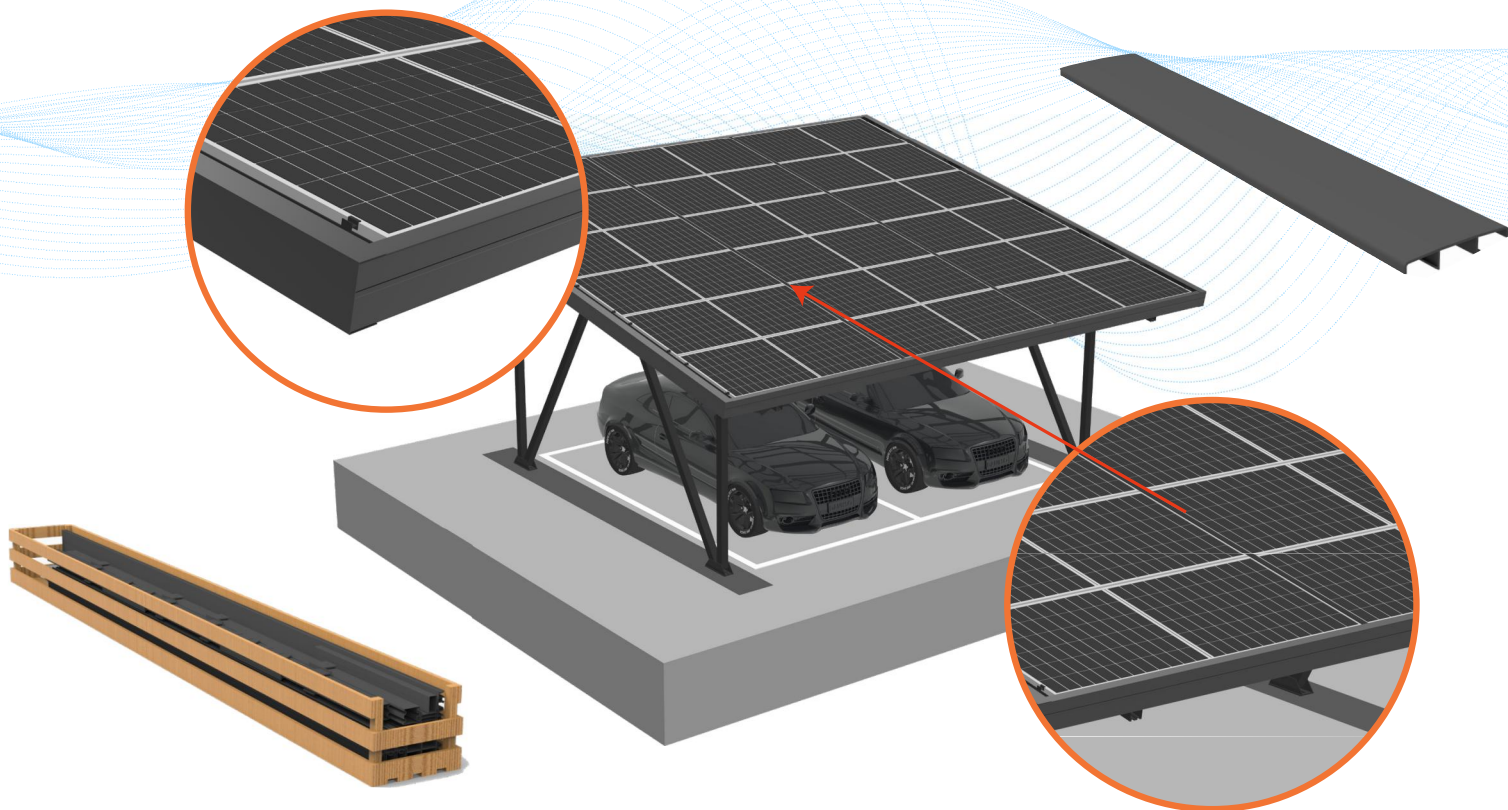
Water flows from the horizontal sink Kit to the vertical sink rail



Water flows from the vertical sink rail to the bottom and out



Hidden solar panels make the whole look more beautiful

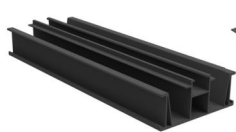


1 Easy to distribute
Kits set packing in 1 pallet
Easy to distribute to end clients and
protect the mounting systems safety

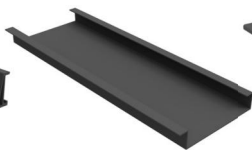
2 Universality
Suitable for most solar panel types
Universal for residential and
commercial
Black or silver

3 Beauty
Cover rail for clamps,
to prevent water between
each panel gap and achieve
the system beauty
Hidden solar panels make
the whole look more beautiful

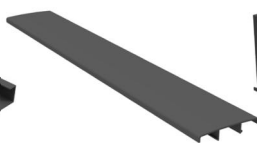
Components



• **WQ-J28-B**
Black Vertical Sink Rail



• **WQ-J525-B**
Black Horizontal Sink Kit



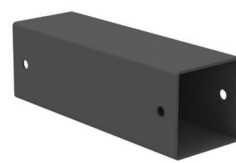
• **WQ-J524-B**
Black J524 Cap



• **WQ-GTR26-B**
Black 26# TR Rail



• **WQ-GTR26-RSK-B**
Black 26# Rail Splice



• **WQ-J264-B**
Black J264 Tube



• **WQ-J27-B**
Black H105 Beam



• **WQ-BK177-B**
Black J177 Base Kit



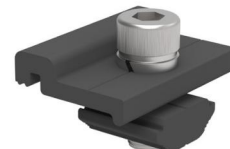
• **WQ-JK177-B**
Black J177 Transfer Kit,
Pre-assembled



• **WQ-TRM-GL-3035-B**
Black TR Landscape
Mid Clamp



• **WQ-TRE-GL-35-B**
Black TR Landscape
End Clamp 35



• **WQ-GTR-RFK-B**
Black Ground Rail
Fix Kit