

Steel Carport Mounting System

Commercial use
waterproof, strong and beauty

Waterproof

- 2 directions conduct water rail
- Prevent carport from water leakage
- Long-lasting service life

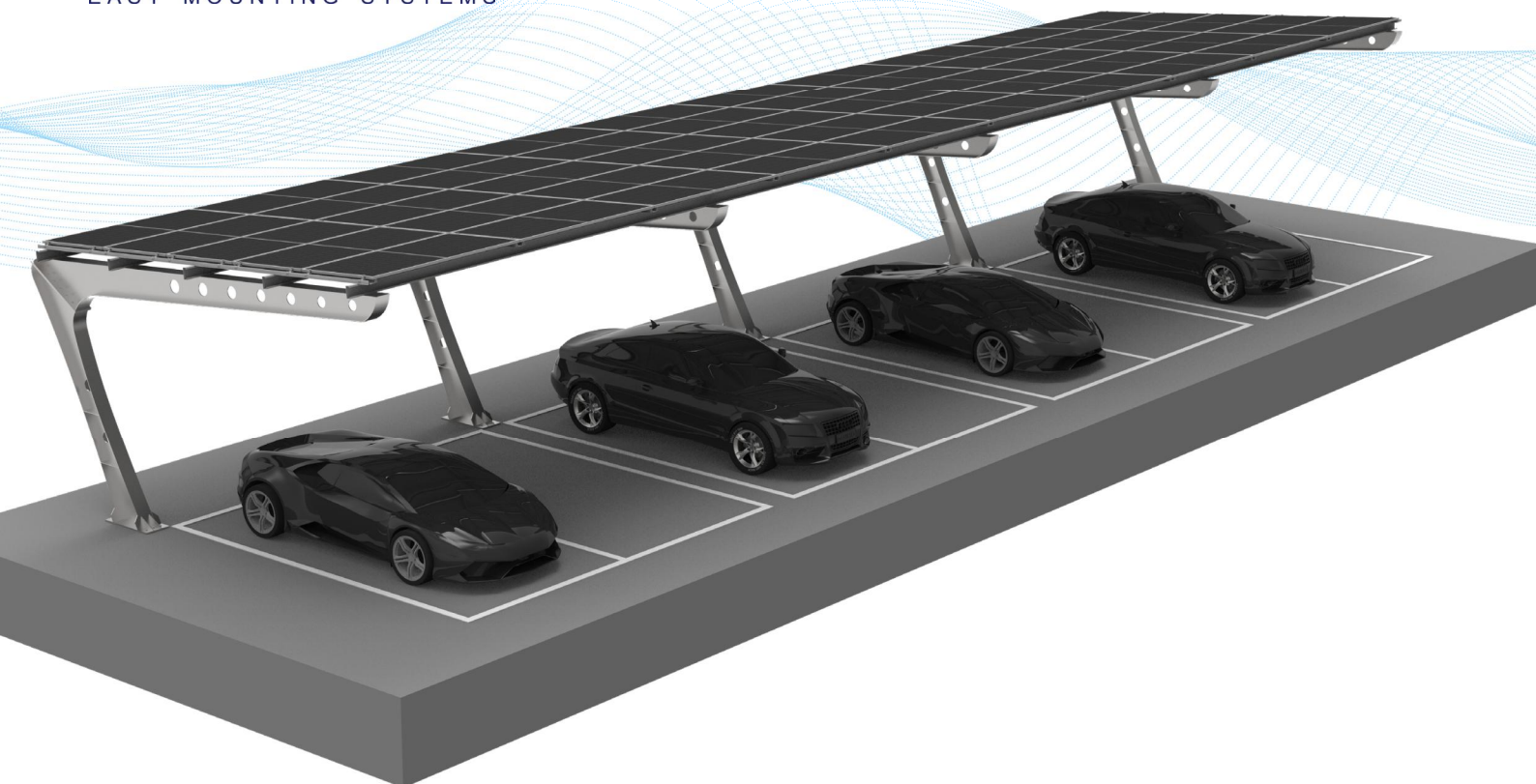
Strong and Easy

- Steel Structure for stability of the carport
- Pre-assembled components for easy and fast installation

OEM Service

- Various parking space
- Single-sided or double-sided
- Edging design optional

SINGLE-SIDED CARPORT



1

Waterproof

Prevent carport from water leakage
2 conduct water sink rail

2

OEM Design

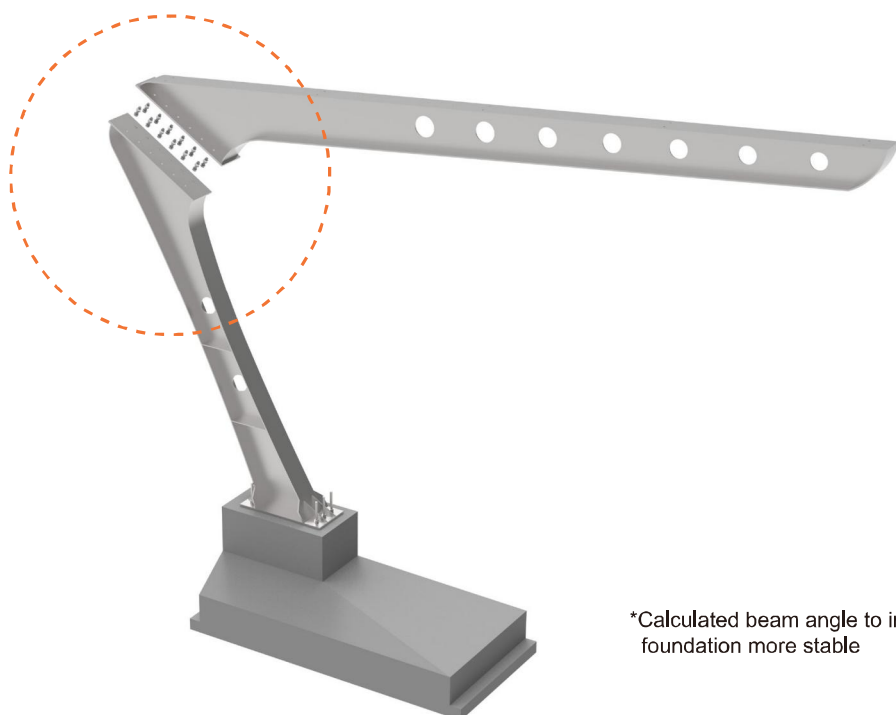
Customized car spacing
Customized PV array
Customized height and tilt angle

3

Stability

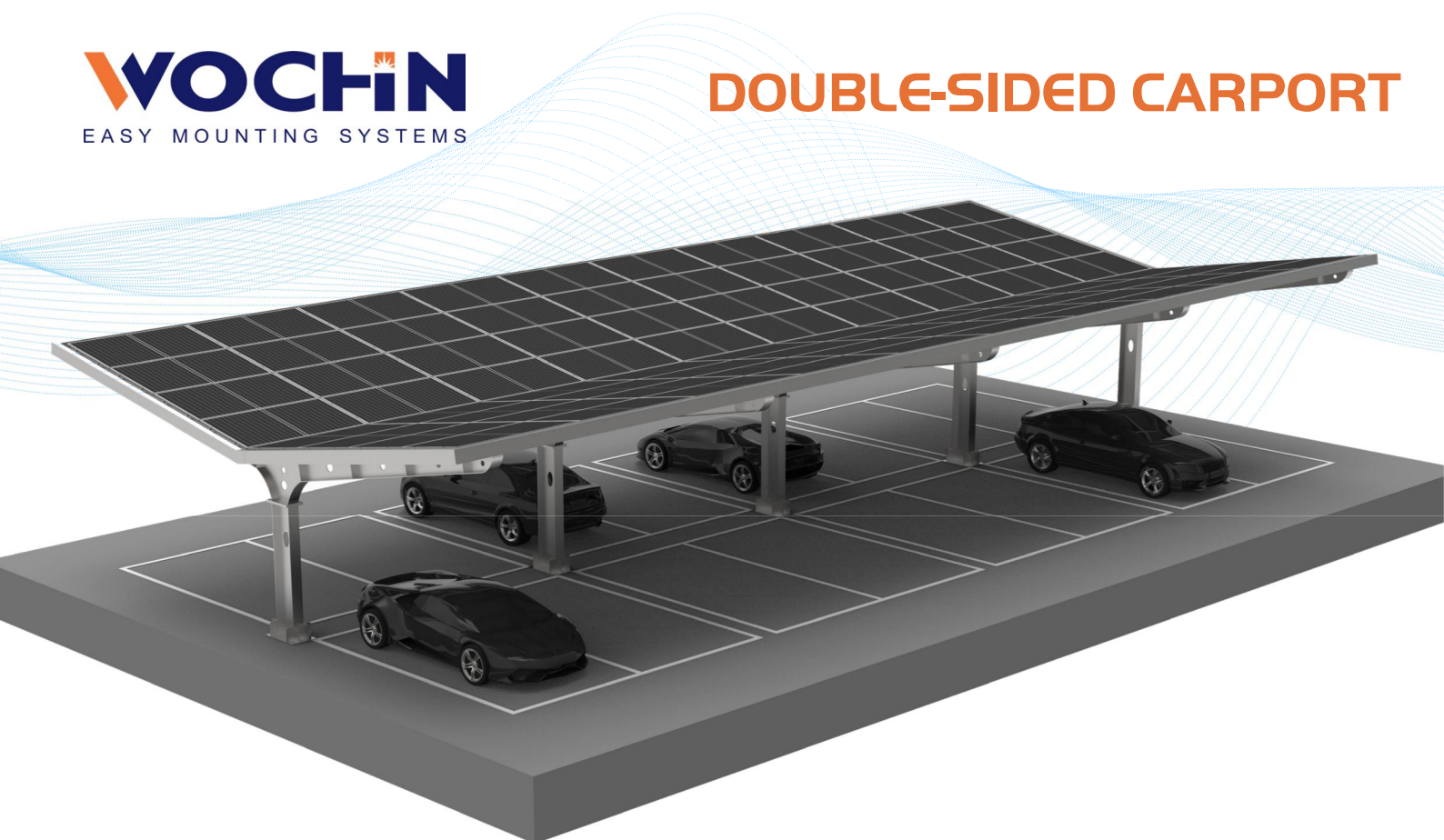
Good load-bearing capacity
Strong support beams

Single-sided Support Beam Display



*Use several screws to fix the beam strongly, no welding

*Calculated beam angle to install on the foundation more stable



Waterproof

- 1 Prevent carport from water leakage
2 conduct water sink rail

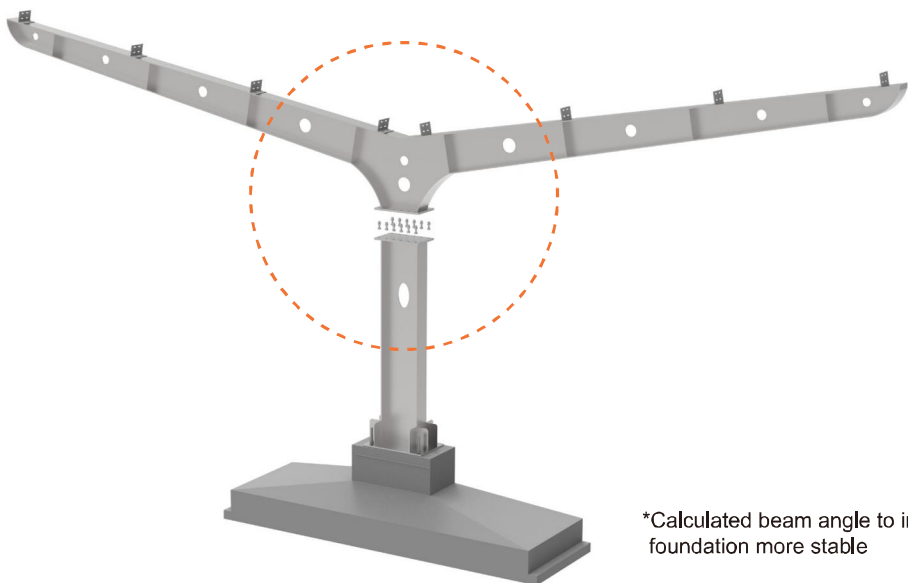
OEM Design

- 2 Customized car spacing
Customized PV array
Customized height and
tilt angle

Efficiency

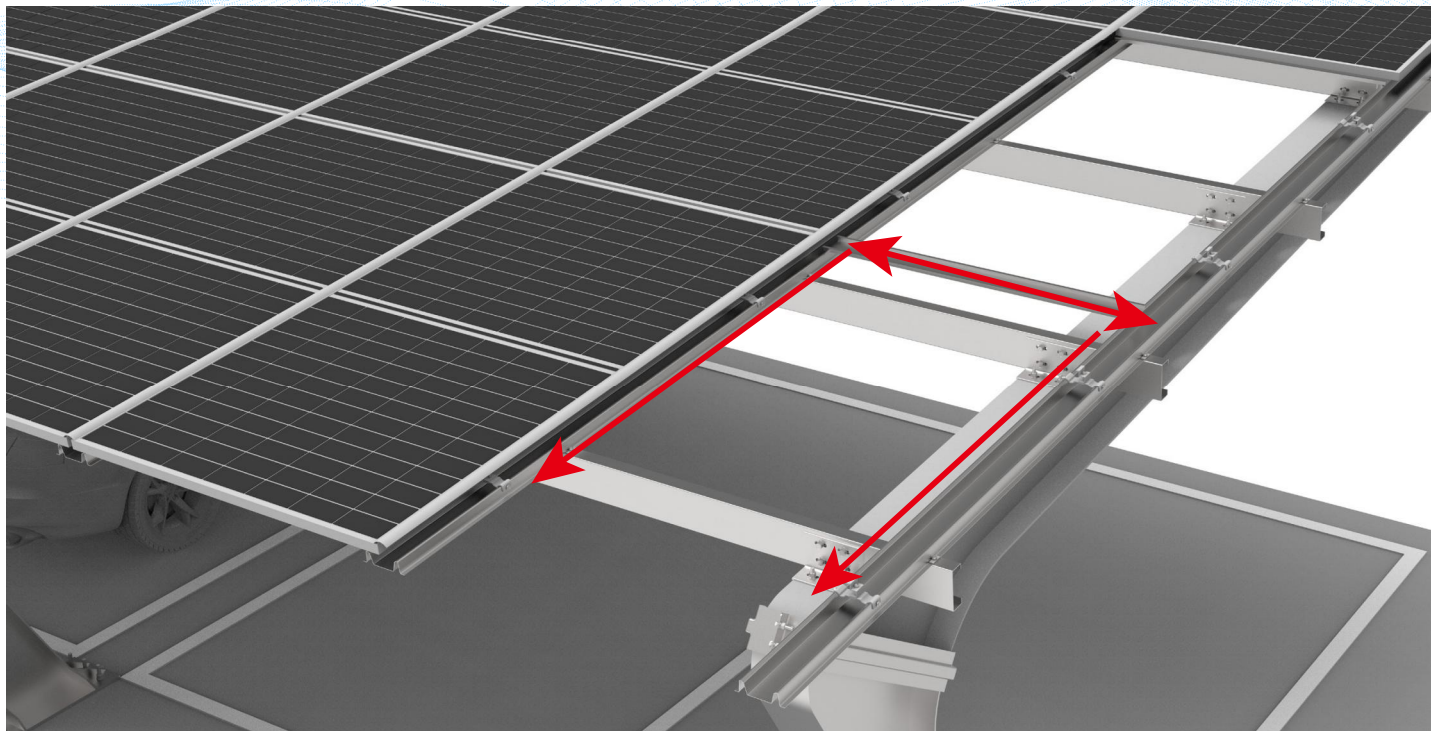
- 3 Double side for car parking space
Allow more cars parking

Double-sided Support Beam Display



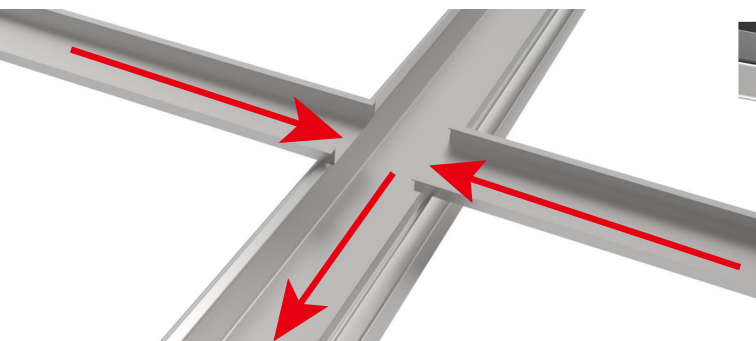
*Use several screws to fix the beam strongly,
no welding

*Calculated beam angle to install on the
foundation more stable

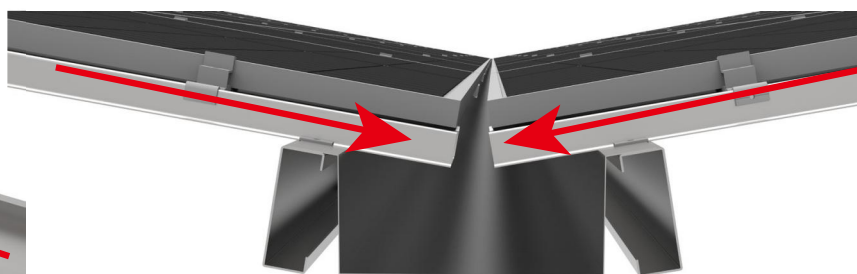


- 1 Waterproof** The carport is equipped with efficient waterproof technology to prevent water leakage
- 2 Long Life** Special waterproof structure ensures extended longevity
- 3 Stability** All beams are carefully treated to withstand exposure to rain and snow

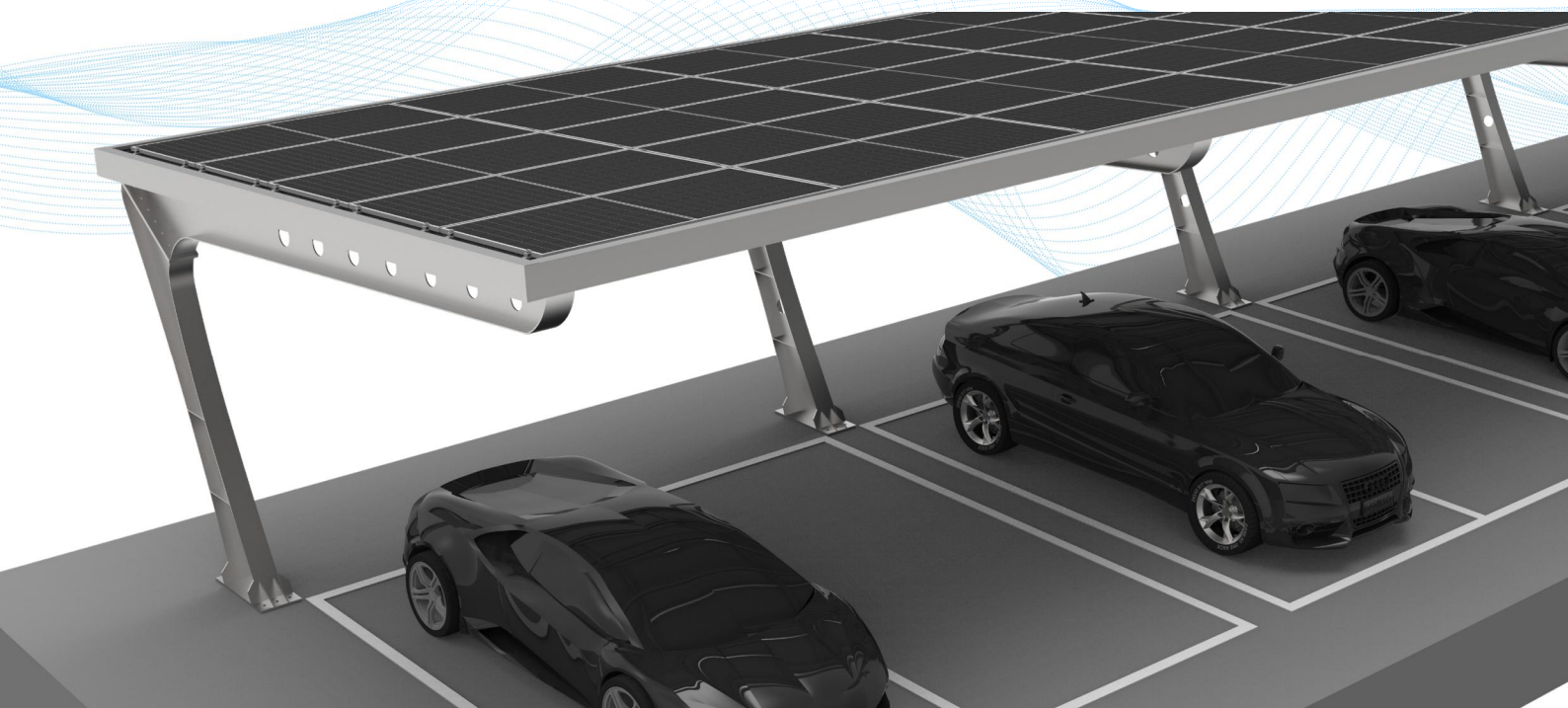
Water Flow Direction Display



*Water will flow along the sink rail between the panels



*And flow out to the bottom



Beauty

- 1 The edging design enhances the overall look of the carport while protecting the edges from damage

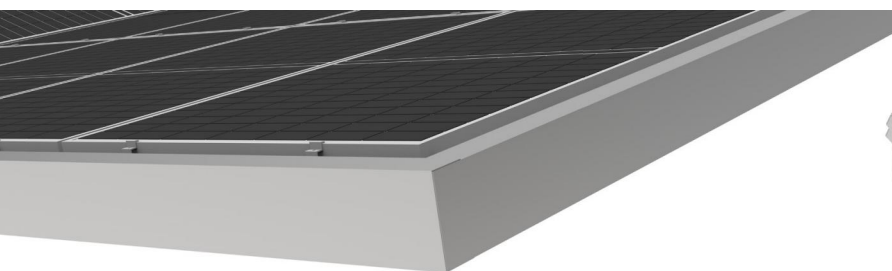
Material

- 2 Made of high-quality ZAM alloy, resistant to corrosion and rust

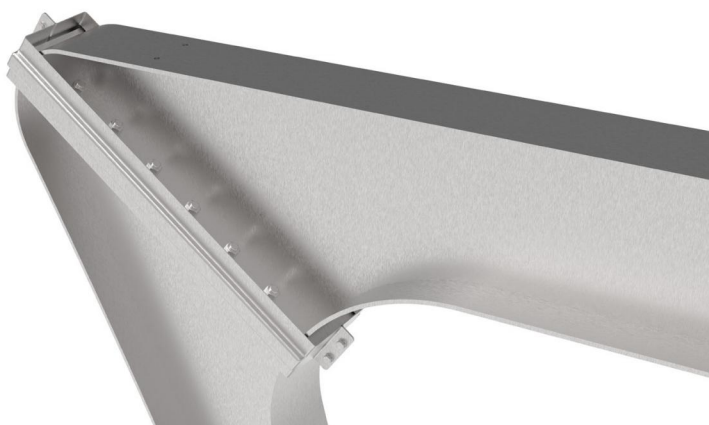
Long-lasting

- 3 Reinforces the structural integrity of the carport, extending its service life

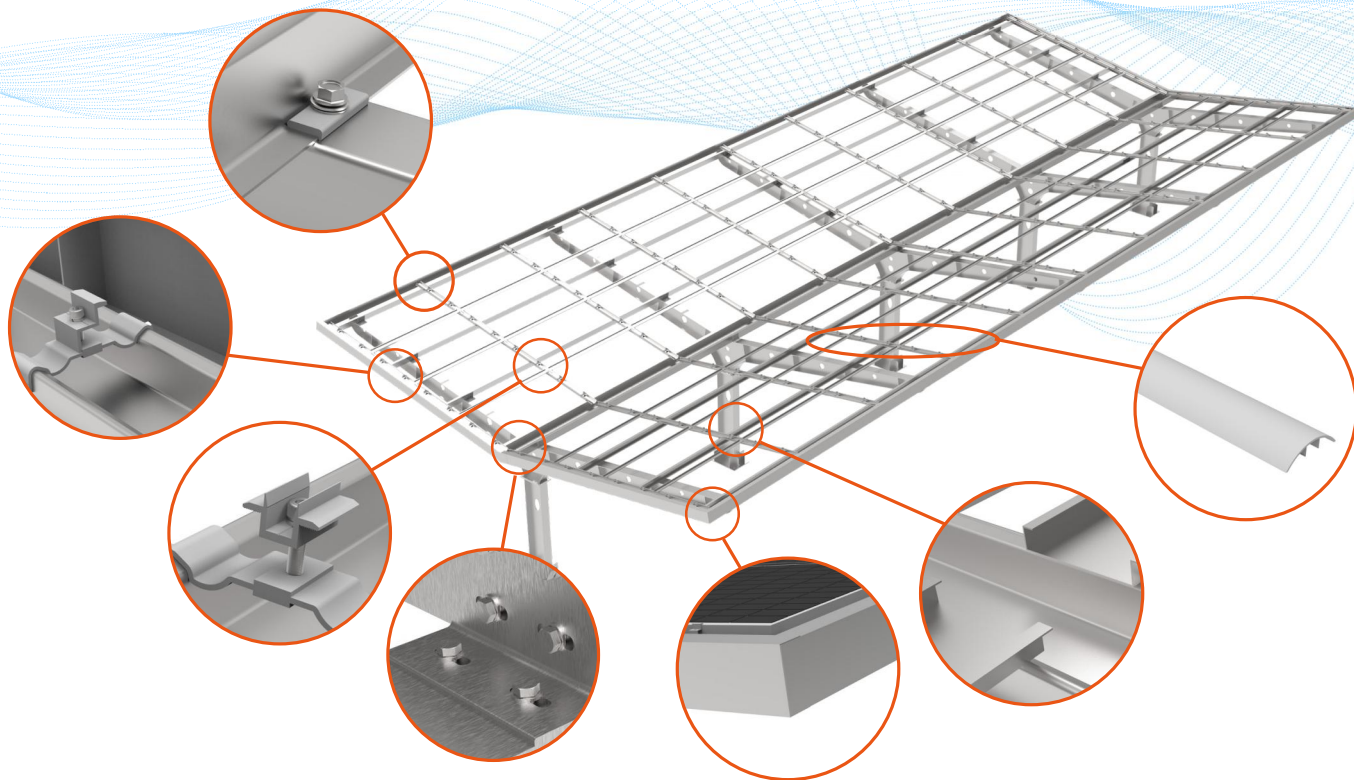
Edging Protection Display



*Edging design protects the edge from damage



*Edging design can make the carport look more beautiful



- 1 Pre-assembled**

Pre-assembled rail kits
Saving labor costs and installation time
- 2 Strong**

Steel beams and rails
Stable structure design
- 3 High load capacity and robust**

Components use long-lasting, corrosion steel process
Structure certified to withstand heavy winds and snow

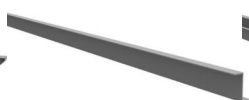
Components List



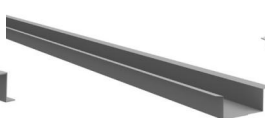
Single-sided Beam



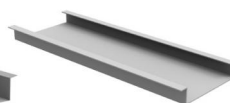
Single-sided Beam



Z-type Steel



Top-empty Sink Rail



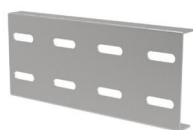
Horizontal Sink Kit



Top-empty Sink Rail



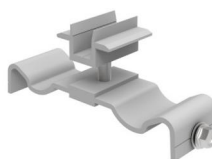
Single-sided Beam



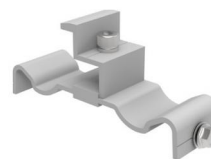
Single-sided Beam



Cap



Top-empty Sink Rail



Horizontal Sink Kit



Vertical Sink Rail
Fix Kit