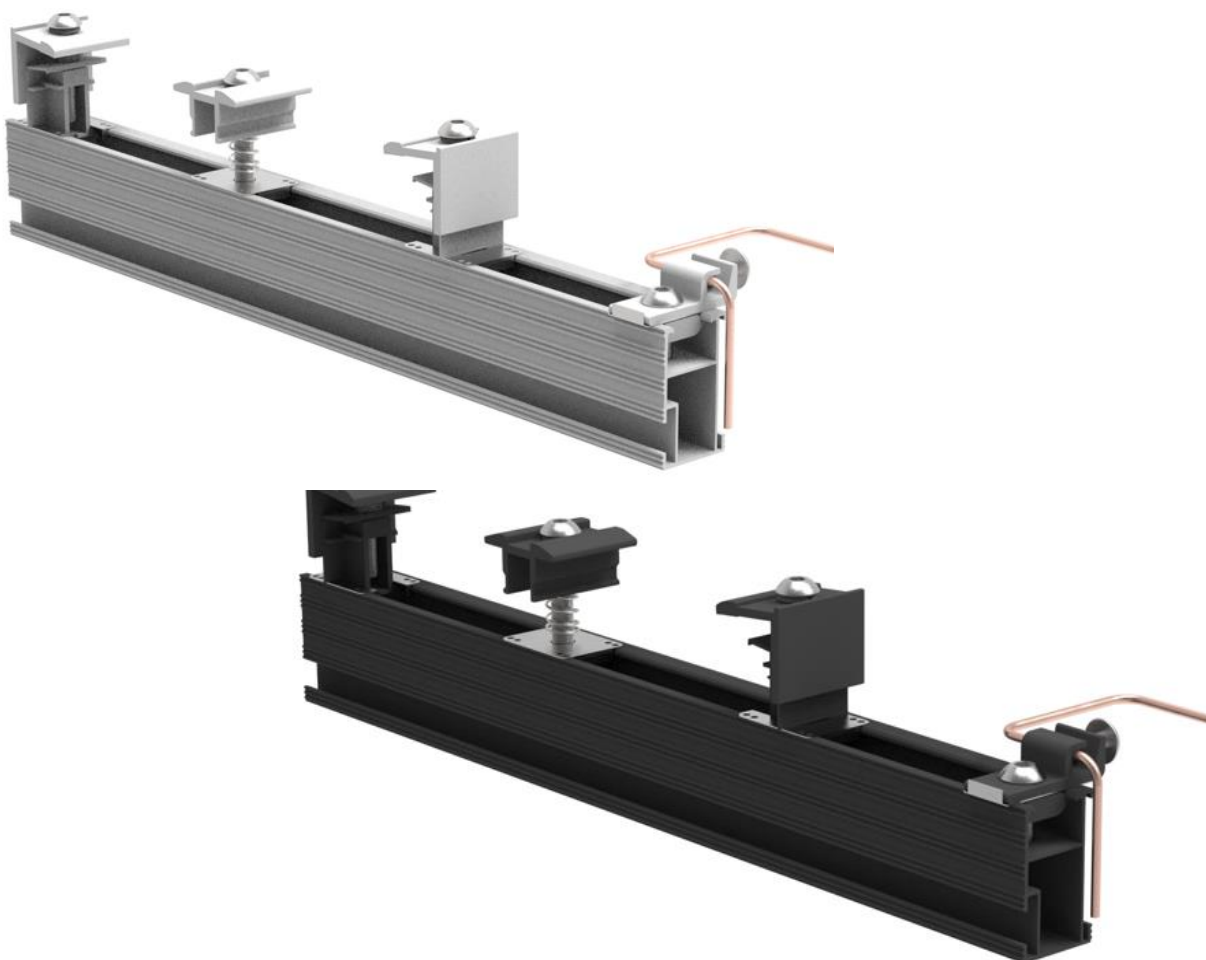


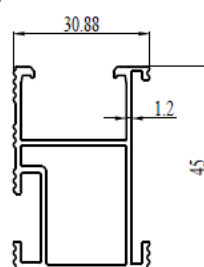
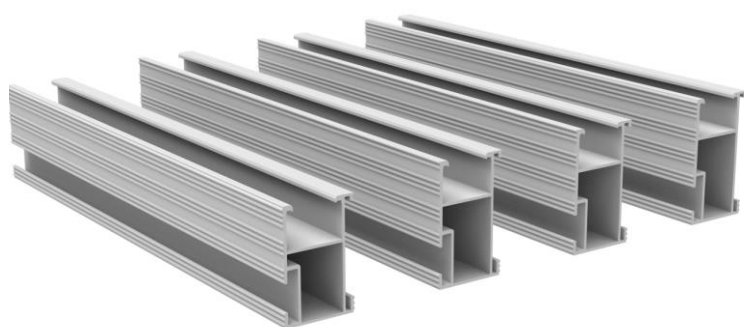
WOCHN T Rail System of the components have been well improved and realize optimal mechanic design. It can be perfect used on trapezoid metal sheet roof, tile roof, corrugated sheet roof, flat concrete roof with cost-effective price.



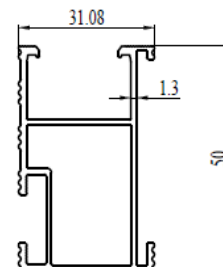
- Universal mid clamp & end clamp for 30-35mm modules installation
- Double supported rail splice, stronger
- 30% less material but not affect force loading
- T bolt insert easier installation way
- Both silver and black anodized are available

As an Easy and Quick solar mounting solutions. WOCHN T Rails systems for solar roof installation, it could help installer to decrease 30% to 40% installation time. Various simple and fast rail fix way for your choice .

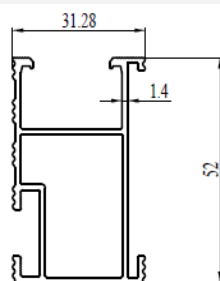
- Material: Al6005-T5
- Color: Silver or Black anodized
- Length: 4200/4600 mm or customized
- Size: four height for choice



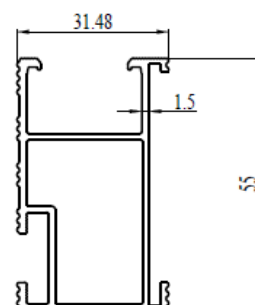
WQ-TR45



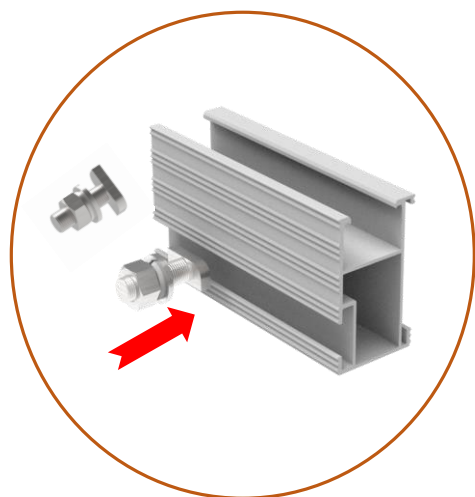
WQ-TR50



WQ-TR52

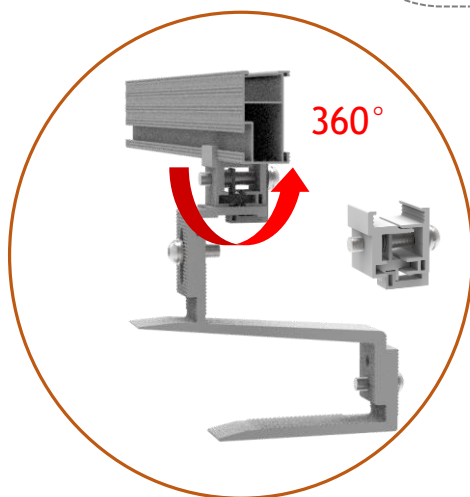


WQ-TR55



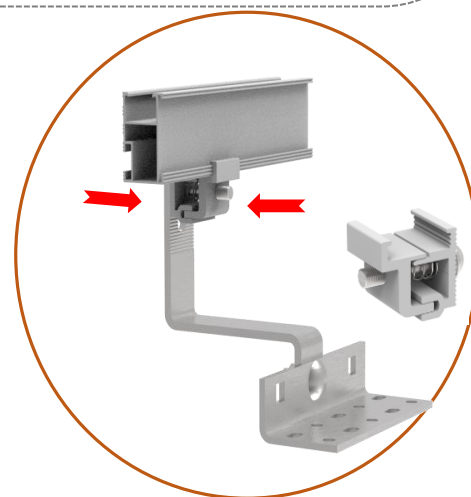
## T Bolt Fixing

Easy to Insert the T bolt to the T rails and connect on roof attachments



## Rotate Adpter Fixing

Easy to mount the panels in portrait and landscape with the Rotate Adpter Fixing



## Side Adpter Fixing

The Side Adpter is a clamp fixing way, easier installation

# TR Rail Splices

WOCHN T Rail Splice Kit designed for connecting T rails, the wider square connect two rails make the system very strong and easy to fix in side with two screw.

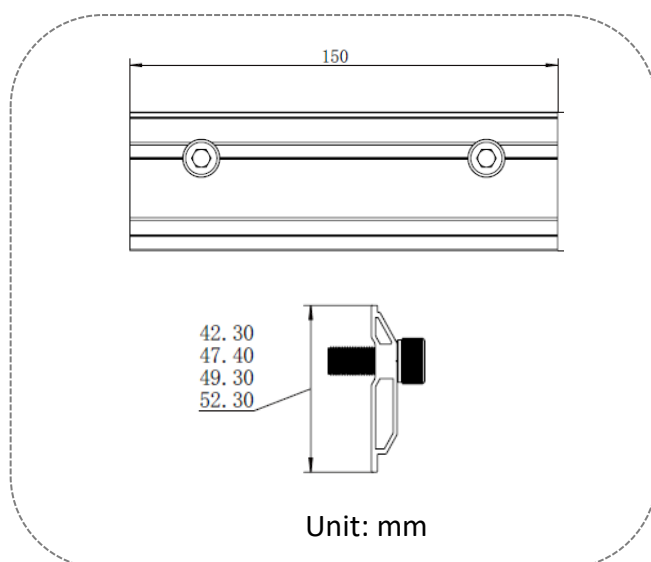
- Material: Al6005-T5
- Color: Silver or Black anodized
- Length: 150 mm
- Size: 150\*52mm



Item:  
WQ-TR45-RSK-S  
WQ-TR50-RSK-S  
WQ-TR52-RSK-S  
WQ-TR55-RSK-S



Item:  
WQ-TR45-RSK-B  
WQ-TR50-RSK-B  
WQ-TR52-RSK-B  
WQ-TR53-RSK-B



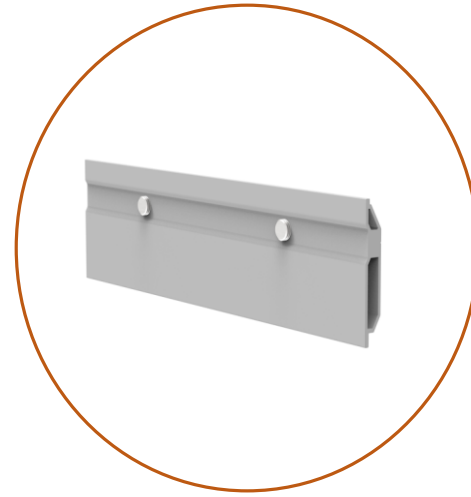
**Artistic**

Coordinated with T Rail System



**Easy Installation**

Easy to mount connect two rail with fixing two screws



**Strong**

The wider square connect two rails make the system strong

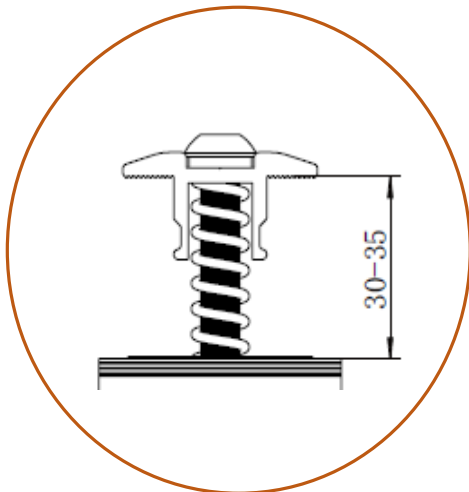
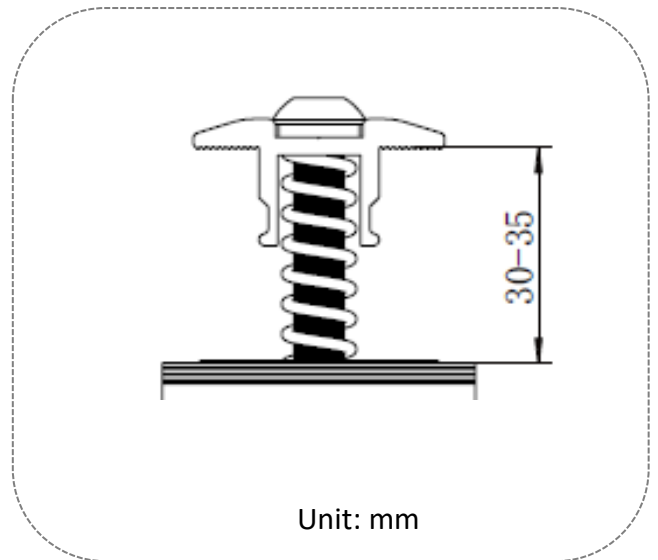
WOCHN TR Mid Clamp is universal for 30-35 mm thickness solar modules, self-standing make it easy installation on T rails, earthing clip integrated with grounding pins to make the system safety.

- Material: Al6005-T5
- Color: Silver or Black anodized
- Width: 38 mm
- Size: for 30-35mm thickness solar modules



Item:  
WQ-TRM-3035-S

Item:  
WQ-TRM-3035-B



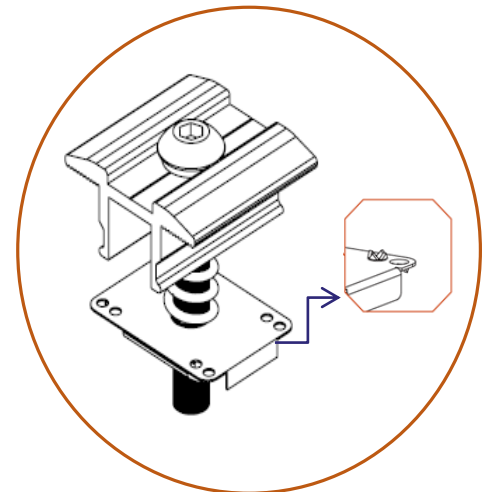
## Universal

Universal for 30-35mm thickness solar modules



## Easy

Oblique side insert and Self-standing make solar panel installation easy

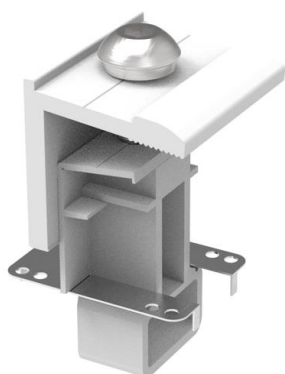


## Safe

Grounding pins integrated make solar system safety

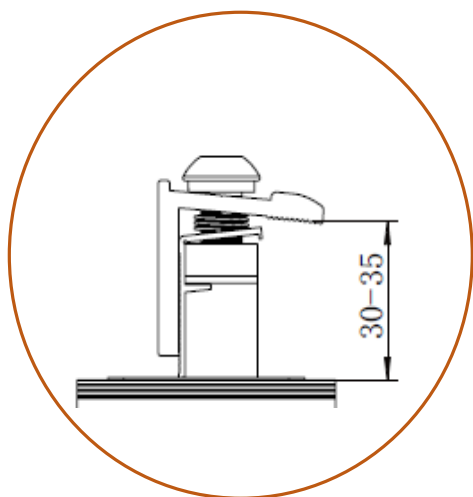
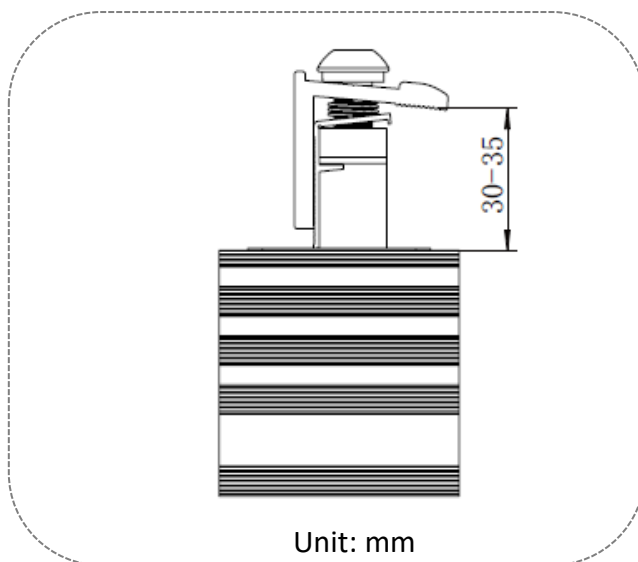
WOCHN One End Clmap is universal for fix 30-35 mm thickness solar modules, self-standing and non-eccentric problem make it easy fixing and fixed very tightly.

- Material: Al6005-T5
- Color: Silver or Black anodized
- Width: 38 mm
- Size: for 30-35mm thickness solar modules



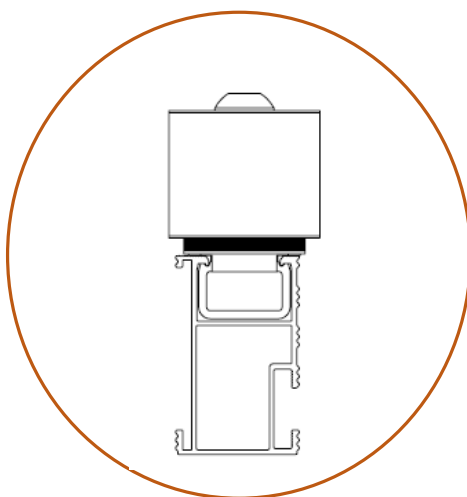
Item:  
WQ-TRE-3035-S

Item:  
WQ-TRE-3035-B



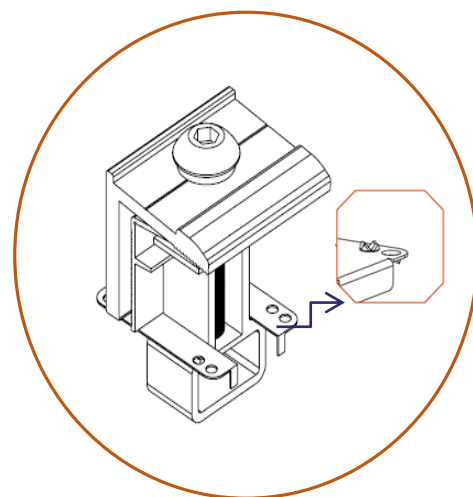
## Universal

Universal for 30-40 mm thickness solar modules



## Easy

Slide in side and self-standing make solar panel installation easy



## Safe

Grounding pins integrated make solar system safety

# TR Grounding Lug

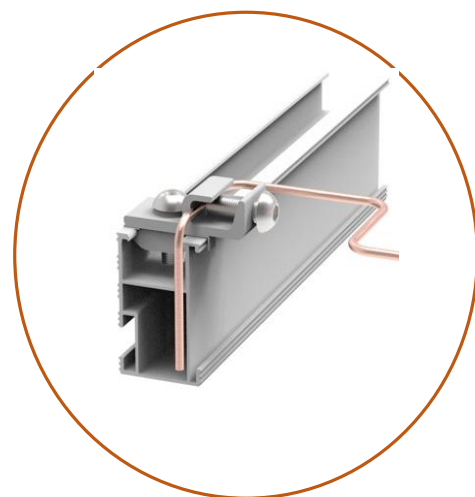
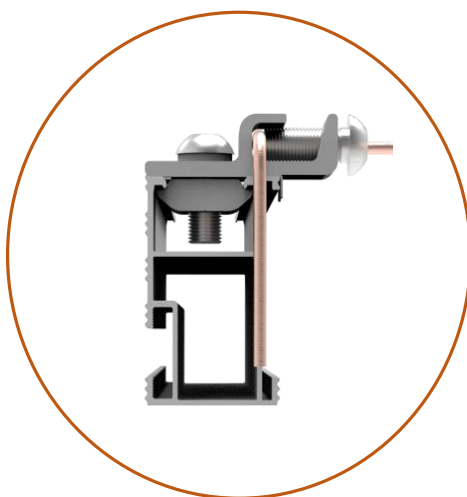
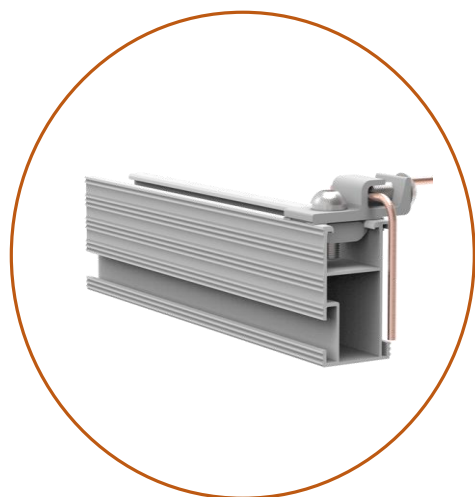
WOCHN grounding lug used to make the PV system safety.

- Material: Al6005-T5
- Color: Silver or Black

Item:WQ-TR-GL-S



Item:WQ-TR-GL-B



**Easy Installation**